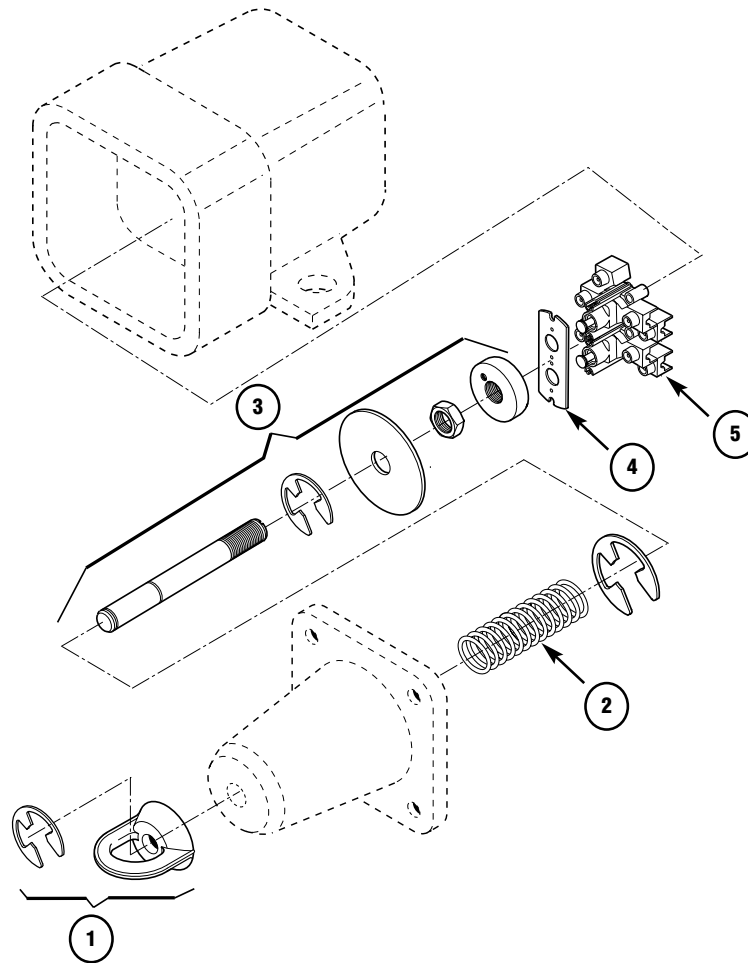


AFU MINE SIGNAL SWITCH – M90*
REPLACEMENT PARTS



ITEM	DESCRIPTION	USED ON	PART NO.
1	PULL RING WITH HARDWARE	AFU, M90 ONLY	AFU-K4
2	SPRING: MAX. WEIGHT OF PULL ROPE 15#	AFU154	AFU:4345A
	SPRING: MAX. WEIGHT OF PULL ROPE 25#	AFU254	AFU:4346A
3	OPERATING SHAFT ASSEMBLY <small>(Includes shaft, nuts, spacer, washers, and hardware)</small>	ALL AFU MINE SIGNALS (M90)	AFU-K1
4	SWITCH MOUNTING STRAP	ALL AFU MINE SIGNALS (M90)	AFU:26785A
5	PUSHBUTTON SWITCH (2 required per unit)	ALL AFU MINE SIGNALS (M90)	ESWP126
6	COMPLETE HOUSING ASSEMBLY W/ SWITCH	AFU154 (M90)*	AFU1549
	INCLUDING CASTING (Items #1-5)	AFU254 (M90)*	AFU2549

* Note: Replacement parts for Model M62, M75 are no longer available

Springs and housings no longer available for AFU104 and 504. Substitute with AFU154 or 254 parts respectively.