

Accessories

One-Hole Strap for 3/8" Armored Cable and Flexible Metal Conduit

CAT. NO.	STD. CTN.	WT./100 (LBS.)
FS100-SC	250	1.70

R-Series Continuous-Thread Rod — Galvanized



CAT. NO.	ROD SIZE (IN.)	ULTIMATE [‡] LOAD IN LBS.	ROOT AREA	DATA FOR PRESSURE PIPING		STD. CTN.
				NOMINAL PIPE SIZE (IN.)	MAX. SAFE LOAD AT 450°	
R628-6 FT.	1/4-20	900	.027	—	—	300
R638-6 FT.	5/16-16	1,900	.068	3/4-2	610	150
R648-6 FT.	1/2-13	3,500	.126	2 1/2-3 1/2	1,130	60
R1028-10 FT.	1/4-20	900	.027	—	—	500
R1038-10 FT.	5/16-16	1,900	.068	3/4-2	610	250
R1048-10 FT.	1/2-13	3,500	.126	2 1/2-3 1/2	1,130	100

[‡] Load Ratings based on safety factor of three.

One-Hole Service Cable Straps



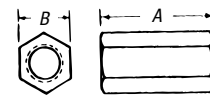
CAT. NO.	FITS CABLE	SHELF CTN.	SHIP CASE	STD. CTN.
SE-100	3#8, 3#6, 3#4	100	1,000	1,000
SE101	3#3, 3#2	100	1,000	1,000
SE102	3#1, 3#0, 3#1/0, 3#2/0	25	250	250
SE103	3#3/0, 3#4/0	25	250	250

Two-Hole Service Cable Straps



CAT. NO.	FITS CABLE	SHELF CTN.	SHIP CASE	STD. CTN.
SE-900	3#8, 3#6, 3#4	100	1,000	1,000
SE901	3#3, 3#2	100	1,000	1,000
SE902	3#1, 3#0, 3#1/0, 3#2/0	25	250	250
SE903	3#3/0, 3#4/0	25	250	250

H-195 Steel Rod Coupling



CAT. NO.	ROD SIZE (IN.)	DIMENSIONS (IN.)		STD. CTN.
		A	B	
H-195-1/4	1/4	3/4	5/8	1,000
H-195-3/8	3/8	1	1/2	500
H-195-1/2	1/2	1	5/8	500
H-195-5/8	5/8	1 1/2	3/4	50