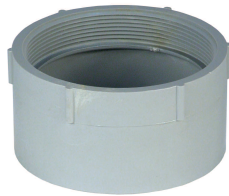
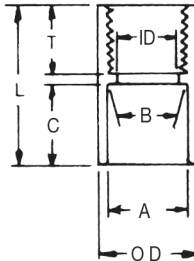


Fittings and Accessories

Female Adapters



For adapting nonmetallic conduits to threaded fittings, metallic systems. Female threads on one end, socket end on other.

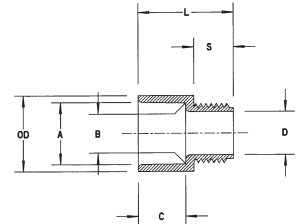


Cat. No.	Size (in.)	Std. Ctn. Qty.	A	B	Min. I.D. (in.)	Max. O.D. (in.)	C T L		
			Typical (in.)				Typical (in.)		
E942D	1/2	150	0.852	0.836	0.620	1-7/64	11/16	3/4	1-9/16
E942E	3/4	100	1.064	1.046	0.822	1-5/16	13/16	3/4	1-5/8
E942F	1	50	1.330	1.310	1.046	1-5/8	15/16	7/8	1-15/16
E942G	1-1/4	30	1.677	1.655	1.377	1-63/64	1	7/8	2
E942H	1-1/2	25	1.918	1.894	1.607	2-5/32	1-1/8	7/8	2-7/32
E942J	2	30	2.393	2.369	2.064	2-47/64	1-3/16	1	2-5/16
E942K	2-1/2	20	2.890	2.868	2.450	3-11/32	1-5/8	1-1/8	2-15/16
E942L	3	25	3.515	3.492	3.000	3-31/32	1-3/4	1-1/8	3-1/16
E942M	3-1/2	20	4.015	3.992	3.500	4-1/2	1-7/8	1-1/8	3-1/4
E942N	4	15	4.515	4.491	4.000	5-1/64	1-3/4	1-1/16	3-13/64
E942P	5	8	5.593	5.553	5.047	6-1/4	1-15/16	1-1/16	3-3/16
E942R	6	6	6.658	6.614	6.055	7-1/4	2-1/8	1-1/16	3-3/8

Male Terminal Adapters



For adapting nonmetallic conduits to boxes threaded fittings, metallic systems. Male threads on one end, socket end on other.

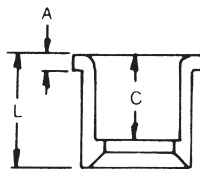


Cat. No.	Size (in.)	Std. Ctn. Qty.	A	B	Min. D (in.)	Max. O.D. (in.)	C S L		
			Typical (in.)				Typical (in.)		
E943D	1/2	150	0.852	0.836	0.594	1.042	0.652	0.545	1.310
E943E	3/4	100	1.064	1.046	0.793	1.290	0.809	0.553	1.470
E943F	1	50	1.330	1.310	1.025	1.580	0.965	0.812	1.902
E943G	1-1/4	30	1.677	1.655	1.345	1.973	1.208	0.816	1.986
E943H	1-1/2	25	1.918	1.894	1.574	2.188	1.155	0.802	2.105
E943J	2	30	2.393	2.369	1.998	2.713	1.145	0.825	2.093
E943K	2-1/2	20	2.890	2.868	2.400	3.290	1.490	0.812	2.480
E943L	3	25	3.515	3.492	2.989	3.965	1.643	0.797	2.660
E943M	3-1/2	20	4.015	3.992	3.405	4.515	1.720	0.802	2.740
E943N	4	15	4.515	4.491	3.895	5.065	1.788	0.733	2.830
E943P	5	8	5.593	5.553	4.900	6.104	1.935	0.990	3.200
E943R	6	6	6.658	6.614	5.900	7.288	2.128	0.985	3.410

Reducer Bushings



For connecting different sizes of conduit. Bell x Spigot.

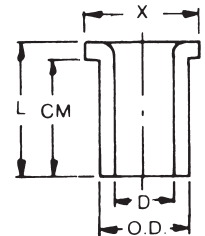


Cat. No.	Size (in.)	Std. Ctn. Qty.	L	A	C
			Typical (in.)		
E950ED	3/4 x 1/2	100	1-5/32	13/64	1-1/32
E950FD-CAR	1 x 1/2	25	1-11/32	3/16	57/64
E950FE	1 x 3/4	100	1-11/32	3/16	1-1/64
E950GE-CAR	1-1/4 x 3/4	10	1-15/32	3/16	1-1/64
E950GF	1-1/4 x 1	50	1-15/32	3/16	1-9/64
E950HF-CAR	1-1/2 x 1	10	1-19/32	3/16	1-9/64
E950HG-CAR	1-1/2 x 1-1/4	10	1-19/32	3/16	1-17/64
E950JG-CAR	2 x 1-1/4	10	1-3/4	7/32	1-17/64
E950JH-CAR	2 x 1-1/2	10	1-3/4	7/32	1-25/64
E950KJ-CAR	2-1/2 x 2	10	2-5/32	3/8	1-27/64
E950LJ-CAR	3 x 2	10	2-1/8	1/4	1-7/8
E950LK	3 x 2-1/2	25	1-15/16	1/4	1-11/16
E950NL	4 x 3	25	2-3/4	5/16	1-15/16

Box Adapters for Enclosures



Adapts nonmetallic conduit to all electrical enclosures by inserting adapter through knockout and cementing into Carlton couplings.



Cat. No.	Size (in.)	Std. Ctn. Qty.	Min. D (in.)	O.D. Typical (in.)	Max. X (in.)	CM L	
						Typical (in.)	
E996D	1/2	100	0.662	0.840	1-7/64	23/32	27/32
E996E	3/4	100	0.824	1.050	1-21/64	25/32	29/32
E996F	1	100	1.049	1.315	1-5/8	61/64	1-3/32
E996G	1-1/4	50	1.380	1.660	1-31/32	1-1/16	1-1/4
E996H	1-1/2	50	1.610	1.900	2-13/64	1-3/16	1-3/8
E996J	2	25	2.067	2.375	2-29/32	1-1/4	1-7/16
E996K	2-1/2	15	2.469	2.875	3-7/16	1-7/8	1-15/16
E996L	3	20	3.068	3.500	4-1/8	2	2-1/16
E996N	4	10	4.026	4.500	5-1/8	2-1/2	2-1/4

Threaded Adapters



Cat. No.	Size (in.)	Std. Ctn. Qty.
E9842D ¹	1/2	25
E9842E ²	3/4	25

¹ Fits 3/4 in. sockets

² Fits 1 in. sockets

Plugs with Pull Tabs (Polyethylene)



Cat. No.	Size (in.)	Std. Ctn. Qty.	Std. Ctn. Wt. (lb.)
P258JT	2	60	3
P258LT	3	30	3
P258NT	4	48	8
P258PT	5	30	6
P258RT	6	30	9