



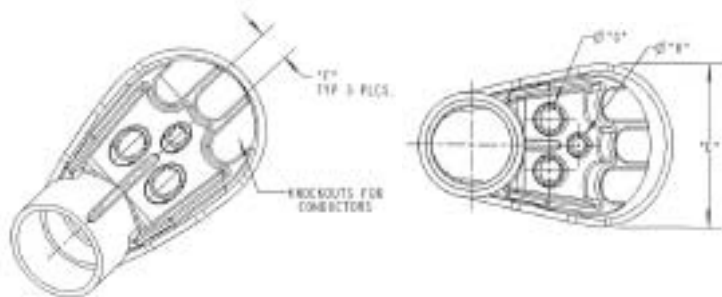
Except where noted by ▶

Caps

Service Entrance Caps

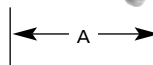


Part No.	Size	Std. Ctn. Qty.	Dimensions (in.)		
			F	G	H
E998D	1/2	5	.45	.45	–
E998E	3/4	20	.45	.45	–
E998E-CAR	3/4	5	.45	.45	–
E998F	1	15	.59	.58	–
E998F-CAR	1	5	.59	.58	–
E998G-CAR	1 1/4	5	.74	.71	.50
E998H-CAR	1 1/2	5	.74	.71	.50
E998J-CAR	2	5	.83	.78	.56
E998K-UPC	2 1/2	2	1.70	1.31	1.00
E998L	3	2	1.70	1.31	1.00
E998N	4	2	2.25	1.88	1.31



Offsets

Meter Offset



Part No.	Size	Std. Ctn. Qty.	Offset	A
▶ E995G	1 1/4	15	0.758	4.230
E995G-CTN	1 1/4	6	0.758	4.230
▶ E995J	2	8	0.684	4.270

Offset



Part No.	Size	Std. Ctn. Qty.	Std. Ctn. Qty. (lbs.)
▶ E994DR-CAR	1/2	25	3
▶ E994ER-CAR	3/4	15	2
▶ E994F	1	50	12

End Caps



Part No.	Size	Std. Ctn. Qty.	Std. Ctn. Qty. (lbs.)
▶ E958D	1/2	100	3
▶ E958E	3/4	100	4
▶ E958F	1	75	5
▶ E958G	1 1/4	40	4
▶ E958H	1 1/2	30	4
▶ E958J	2	25	5
▶ E958K	2 1/2	10	4
▶ E958L	3	10	5
▶ E958N	4	5	17
▶ E958P	5	5	11
▶ E958R	6	5	13

End Bells

End Bells



Part No.	Size	Std. Ctn. Qty.	Std. Ctn. Qty. (lbs.)
▶ E997F	1	50	1
▶ E997F-CAR	1	15	1
▶ E997G	1 1/4	35	1
▶ E997G-CAR	1 1/4	15	1
▶ E997H	1 1/2	30	1
▶ E997H-CAR	1 1/2	10	1
▶ E997J	2	40	1
▶ E997J-CAR	2	10	1
▶ E997K	2 1/2	30	2
▶ E997K-CAR	2 1/2	10	2
▶ E997L	3	50	2
▶ E997L-CAR	3	10	2
▶ E997M	3 1/2	40	10
▶ E997N	4	30	11
▶ E997P	5	15	10
▶ E997R	6	10	7.4
▶ E997T	8	3	14.55

PVC Riser Caps



Part No.	Size	Std. Ctn. Qty.	Std. Ctn. Qty. (lbs.)
▶ E935J	2	25	9
▶ E935L	3	25	18
▶ E935N	4	25	18
▶ E935P	5	25	35
▶ E935R	6	10	13

Fabricated End Bells Schedule 40



Part No.	Size	Std. Ctn. Qty.	Std. Ctn. Qty. (lbs.)
E949J5	2" x 5"	50	10
E949J6	2" x 6"	25	12
E949JN	2" x 4"	25	7
E949JX	2" x 8"	12	7
E949LR	3" x 6"	20	21
E949N5	4" x 5"	20	2
E949NR	4" x 6"	15	21
E949R5	6" x 5"	12	27
E949RX	6" x 8"	6	17