

TYPE YRB

HYREDUCER™

FOR ALUMINUM TO COPPER AND
ALUMINUM TO ALUMINUM

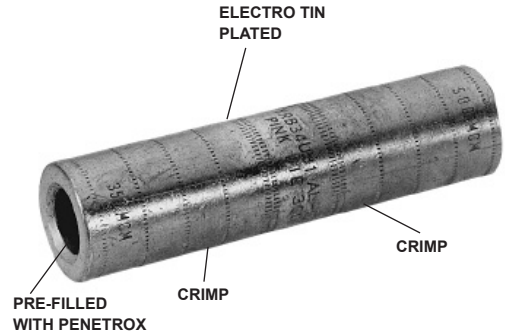


UL Listed 90° C, Up to 35 kV ♦

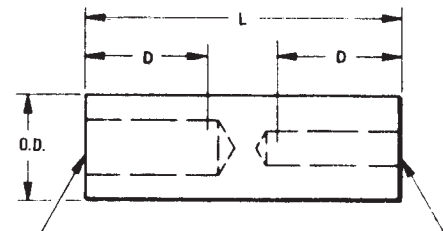
HYREDUCER™ type YRB reducer butt splice is designed to splice two different conductor sizes and is UL Listed for aluminum to copper and aluminum to aluminum applications. The outside diameter is held constant to minimize installation dies and is factory prefilled with PENETROX™.

Features & Benefits

- Aluminum splice reducers are dual rated to accommodate both copper and aluminum wire and are indicated with AL-CU on the connector
 - AL9CU indicates the terminal can accommodate aluminum and copper wire and is UL Listed 90°C, up to 35kV
 - AL7CU indicates the terminal can accommodate aluminum and copper wire and is UL Listed 75°C, up to 35kV
- Barrel features an internal chamfer at the wire entry to ensure smooth insertion of the wire, preventing possible damaging of the wire strands during insertion
- Electro-tin plated unless otherwise specified to reduce galvanic corrosion (bimetallic) and resist corrosive elements
- Connectors are clearly marked with crimp band locations
- Factory pre-filled with PENETROX™ A13 oxide inhibitor
- Color-coded end caps are factory inserted in the barrels to match the die color code; prevent foreign materials from entering the barrel



C-211



- The barrels are designed to accommodate larger run conductor and smaller tap conductor so the inside diameters on each end of the barrel are different
- Aluminum oxidation is not easily detected but causes resistance in a connection so it is imperative that the proper preparation takes place prior to making an aluminum-to-aluminum connection

Catalog Number	Conductor Range ● Aluminum or Copper Size †		Dimensions			Installation Tooling ▲ Hydraulic Tools, Die Sets (No. of Crimps ‡)				Wire Strip Length
	Barrel A	Barrel B	O.D.	D	L	Y35 ■, Y39, Y750, Y46*	‡	Die▲ Index	Color Code	
YRB2U4	1 str. 2 str.	4 str. 3 str.	0.65	0.88	2.00	U25ART	1	296	Tan	15/16
YRB25U2	1/0 str.	1 str. 2 str.	0.65	0.88	2.00	U25ART	1	296	Tan	15/16
YRB27U25	3/0 str.	1/0 str.	0.85	1.36	3.31	U28ART	2	298	White	1-7/16
YRB27U26	3/0 str.	2/0 str.	0.85	1.36	3.31	U28ART	2	298	White	1-7/16
YRB28U26	4/0 str.	2/0 str.	0.85	1.36	3.31	U28ART	2	298	White	1-7/16
YRB29U28	250 kcmil	4/0 str.	1.11	1.73	4.21	U31ART	2	299	Brown	1-13/16
YRB31U28	350 kcmil	4/0 str.	1.11	1.73	4.21	U31ART	2	299	Brown	1-13/16
YRB31U29	350 kcmil	250 kcmil	1.11	1.73	4.21	U31ART	2	299	Brown	1-13/16
YRB34U31	500 kcmil	350 kcmil	1.31	2.11	5.12	U34ART	4	300	Pink	2-3/16
YRB36U31	600 kcmil	350 kcmil	1.46	2.25	5.57	U39ART-2	4	936	Yellow	2-5/16
YRB36U34	600 kcmil	500 kcmil	1.46	2.25	5.57	U39ART-2	4	936	Yellow	2-5/16
YRB39U34	700/750 kcmil ● 900 Compact AL ▼	500 kcmil	1.46	2.25	5.57	U39ART-2	4	936	Yellow	2-5/16
YRB39U36	700/750 kcmil ● 900 Compact AL ▼	600 kcmil	1.46	2.25	5.57	U39ART-2	4	936	Yellow	2-5/16

† Contact BURNDY® for conductor sizes not shown.
▲ See tooling section of this catalog for complete tool and die listings.
‡ Number of crimps.
* Use PUADP-1 adaptor with U dies shown in Y46 HYPRESS™.

■ The maximum size for the Y35 is 400 kcmil.
♦ For applications greater than 2000 Volts consult cable manufacturer for voltage stress relief instructions.
● Also accommodates compressed and compact conductors (except 700 kcmil in 750 kcmil barrel).

▼ Tested with Y644HSXT and PAT644XT-18V dieless tools only and not UL Listed with any tool on 900 Compact AL.
Note: All dimensions shown are for reference only.