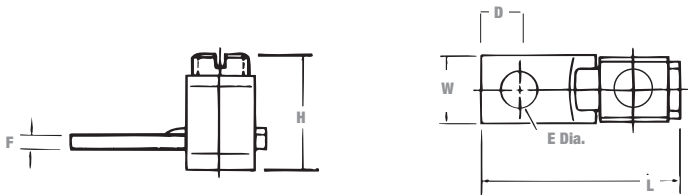


## Copper Mechanical Connectors



### Type STC — Copper Single Conductor, One-Hole Mount (Straight Tang)

- Uniquely designed pressure bar and notched v-bottom collar provide a vise-like grip between conductor and terminal
- CSA Certified and UL Listed for copper conductors
- Made of electrolytic seamless coppers
- Screws are zinc plated steel



| Cat. No. | Conductor Range |           | Dimensions (in.) |       |         |       |       |       |
|----------|-----------------|-----------|------------------|-------|---------|-------|-------|-------|
|          | Max.            | Min.      | L                | W     | H       | F     | E     | D     |
| STC1014* | 10 AWG          | 14 AWG    | 1                | 5/16  | 1/2     | 5/64  | 5/32  | 3/16  |
| STC0614  | 6 str.          |           | 1-9/64           | 3/8   | 11/16   |       | 13/64 | 7/32  |
| STC0414  | 4 str.          | 8 str.    | 1-1/4            | 1/2   | 37/32   | 3/32  | 17/64 | 1/4   |
| STC0208  | 2 str.          |           | 1-15/32          |       | 31/32   |       |       | 1/7   |
| STC1102  | 1/0 str.        | 2 str.    | 1-15/16          | 5/8   | 1-1/4   | 1/8   | 13/32 | 7/16  |
| STC3104  | 3/0 str.        | 4 str.    | 2-1/4            | 3/4   | 1-9/16  |       |       | 11/32 |
| STC4102  | 4/0 str.        | 2 str.    | 2-3/8            | 1     | 1-21/32 | 3/16  | 13/32 | 5/8   |
| STC3511  | 350 kcmil       | 1/0 str.  | 3-1/4            |       | 1-5/8   |       |       | 15/16 |
| STC5011  | 500 kcmil       |           | 3-7/8            | 1-1/2 | 1-13/16 | 15/16 |       |       |
| STC9960  | 1000 kcmil      | 600 kcmil | 5                | 2     | 2-5/8   | 1/4   | 17/32 | 1-1/8 |

\* CSA not applicable.

## Competitive Cross Reference

| Types L — Copper Mechanical Connectors, Single Conductor, One-Hole Mount |            |        |              |       |          |         |        |
|--|------------|--------|--------------|-------|----------|---------|--------|
| Blackburn®   | Penn Union | Burndy | IlSCO/Utilco | T&B®  | Anderson | Dossert | Gedney |
| L35  | PNL-8      | KA8C   | SLU-35       | 31003 | LU-08    | D-35    | SL081  |
| L70  | PNL-4      | KA4C   | SLU-70       | 31005 | LU-04    | D-70    | SL041  |
| L125   | PNL-1/0    | KA25   | LO-0         | 31007 | LU-1/0   | D-10    | SL211  |
| L250   | PNL-250    | KA28   | LO-250       | 31011 | —        | D-25    | SL241  |
| L400   | PNL-500    | KA34   | LO-500       | 31015 | LU-500   | D-50    | SL501  |
| L650   | PNL-1000   | QA44B  | LO-1000      | 31019 | LU-1000  | D-100   | SL921  |

| Types L — Copper Mechanical Connectors, Single Conductor, Two-Hole Mount |            |         |              |       |          |         |        |
|--|------------|---------|--------------|-------|----------|---------|--------|
| Blackburn®   | Penn Union | Burndy  | IlSCO/Utilco | T&B®  | Anderson | Dossert | Gedney |
| L1252  | PNL-1/0-2  | QA1C-2B | E-125        | 32007 | —        | —       | SL212  |
| L2502  | PNL-250-2  | QA28-2B | E-225        | 32011 |          |         | SL242  |
| L4002  | PNL-500-2  | QA35-2B | E-400        | 32015 |          |         | S1502  |
| L6502  | PNL-1000-2 | QA44-2B | E-650        | 32019 |          |         | SL922  |

| Types TL — Copper Mechanical Connectors, Two Conductors, Two-Hole Mount |            |          |              |         |            |         |        |
|---|------------|----------|--------------|---------|------------|---------|--------|
| Blackburn®  | Penn Union | Burndy   | IlSCO/Utilco | T&B®    | Anderson   | Dossert | Gedney |
| TL250   | —          | Q2A31-2N | LU-4         | 32013BD | —          | D2-25   | SLL302 |
| TL400   | SLL504     | Q2A34-2N | —            | 32015BD | LU2-500-2N | D2-50   | SLL504 |
| TL650   | —          | Q2A44-2N | —            | 32019BD | —          | D2-100  | SLL924 |

| Type STC — Copper Single Conductor, One-Hole Mount, Straight Tang |            |         |              |      |          |         |        |
|---|------------|---------|--------------|------|----------|---------|--------|
| Blackburn®  | Penn Union | Burndy  | IlSCO/Utilco | T&B® | Anderson | Dossert | Gedney |
| STC1014   | —          | —       | SLS25        | —    | —        | —       | —      |
| STC0614   |            | KPA8CUP | SLS35        |      |          |         |        |
| STC0414   |            | KPA4CUP | SAS70        |      |          |         |        |
| STC0208   |            | —       | SLS70        |      |          |         |        |
| STC1102   |            | KPA25UP | SLS125       |      |          |         |        |
| STC3104   |            | —       | SLS175       |      |          |         |        |
| STC4102   |            | KPA28UP | SLS225       |      |          |         |        |
| STC3511   |            | —       | SLS300       |      |          |         |        |
| STC5011   |            | KPA34UP | SLS400       |      |          |         |        |
| STC9960   |            | —       | SLS650       |      |          |         |        |

| Type BTC — Copper Single Conductor, One-Hole Mount, Offset Tang |            |        |              |      |          |         |        |
|---|------------|--------|--------------|------|----------|---------|--------|
| Blackburn®  | Penn Union | Burndy | IlSCO/Utilco | T&B® | Anderson | Dossert | Gedney |
| BTC1014   | SLU-25     | —      | SLU-25       | —    | —        | —       | —      |
| BTC0614   | SLU-35     | KPA8C  | SLU-35       |      |          | G-35-1  |        |
| BTC0208   | SLU-70     | KPA4C  | SLU-70       |      |          | G-70-1  |        |
| BTC1102   | SLU-125    | KPA25  | SLU-125      |      |          | G-125-1 |        |
| BTC3104   | SLU-175    | —      | SLU-175      |      |          | —       |        |
| BTC4102   | SLU-225    | KPA28  | SLU-225      |      |          | G-225-1 |        |
| BTC3511   | SLU-300    | —      | SLU-300      |      |          | —       |        |
| BTC5011   | SLU-400    | KPA34  | SLU-400      |      |          | G-400-1 |        |
| BTC9960   | SLU-650    | —      | SLU-650      |      |          | G-650-1 |        |