

## Conduit Caps



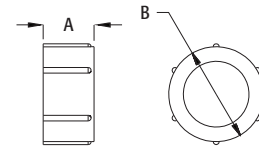
RGD200C

Conduit cap and insulating bushing.

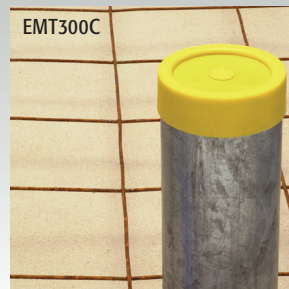
CATALOG NUMBER	UPC/DCI/NAED MFG #018997	TRADE SIZE	UNIT PKG	STD PKG	DIM A	DIM B
RGD50C	51937	1/2	100	1000	.531	.840
RGD75C	51938	3/4	100	1000	.531	1.056
RGD100C	51939	1	100	100	.625	1.280
RGD125C	51940	1-1/4	100	100	.625	1.660
RGD150C	51941	1-1/2	100	100	.625	1.915
RGD200C	51942	2	50	50	.625	2.377
EMT250C*	12215	2-1/2	25	25	1.225	3.062
EMT300C*	12217	3	25	25	1.225	3.690
EMT350C*	12219	3-1/2	25	25	1.231	4.187
EMT400C*	12221	4	25	25	1.233	4.815

\*Can also be used for EMT.

See page B-1 for EMT Insulating Bushings size 1/2" through 4".



Use this capped version to seal off conduit during concrete pours. Then remove cap/seal with razor knife or use screwdriver to punch hole in cap.



(String can be used to aid removal.)

## Long Conduit Nipples



Zinc die-cast.

CATALOG NUMBER	UPC/DCI/NAED MFG #018997	TRADE SIZE	UNIT PKG	STD PKG	DIM A	DIM B	DIM C
501L	50130	1/2	100	1000	.900	.800	1.055
502L	50230	3/4	50	500	.900	.800	1.300
503L	50330	1	25	100	.900	.770	1.670

