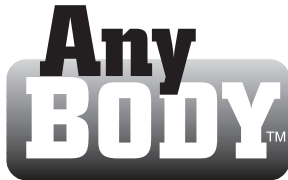


Non-Metallic AnyBODY™ Conduit Bodies



935NM ships as LB



Converts to a...



C



LL



LR



T

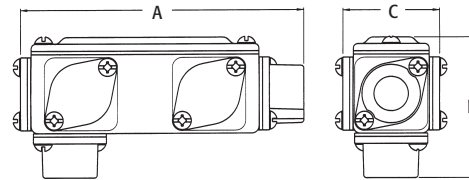
Non-metallic. Five conduit bodies in one! Ships as an LB, but converts to a T, LL, LR, or C. Switch covers and flanges as needed to create the style you need. Includes cover, foam gaskets, & screws

FEATURES AND BENEFITS

- Meets NEC 2014 Section 314.16 Paragraph (C) (2) for conduit bodies with splices, taps, or devices
- Convenient and easy to use
- Saves the time, space, and cost of stocking five different conduit bodies (LB, T, LL, LR, C)
- Includes flanges for three openings
- Volume and wire fill marked inside bodies
- Using standard PVC cement, AnyBODY glues onto pipe for easy installation
- AnyBODY NM Cover and Gasket Kits available
- All gaskets are secured and maintain a rain-tight seal

CATALOG NUMBER	UPC/DCI/NAED MFG #018997	TRADE SIZE	CUBIC INCHES	UNIT PKG	STD PKG	DIM A	DIM B	DIM C
930NM	12500	1/2	4.50	10	10	5.150	2.560	1.750
931NM	12501	3/4	8.50	10	10	5.670	2.800	2.100
932NM	12502	1	12.00	5	5	6.560	3.260	2.240
933NM	12503	1-1/4	33.50	2	10	8.510	3.910	3.000
934NM	12504	1-1/2	33.50	2	10	8.510	3.910	3.000
935NM	12505	2	65.30	1	5	10.840	4.710	3.630
936NM	12506	2-1/2	194.00	1	1	14.440	6.470	4.980
937NM	12507	3	194.00	1	1	14.560	6.600	4.980
938NM	12508	3-1/2	369.00	1	1	17.170	7.610	6.090
939NM	12509	4	369.00	1	1	17.250	7.690	6.090

PATENTED.

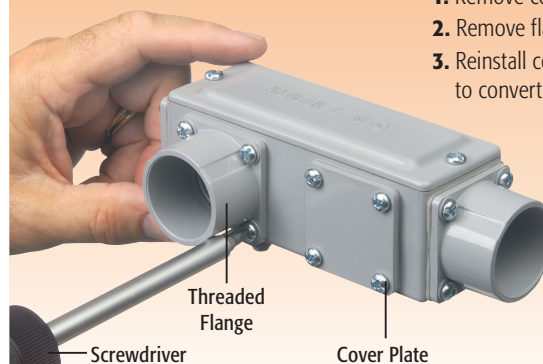


930NM



E170558 LR49636

935NM 2" ANYBODY SHOWING CONVERSION TO LR



1. Remove cover plate.
2. Remove flange.
3. Reinstall cover plate and flange in the appropriate opening to convert AnyBODY to the desired configuration.

COMPETITIVELY PRICED WITH LBS & NO EXTRA COST FOR Ts