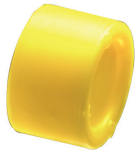


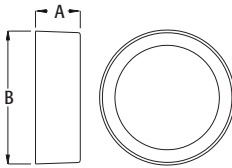
Conduit Caps



EMT50C



EMT75C



Conduit cap and insulating bushing.

CATALOG NUMBER	UPC/DCI/NAED MFG #018997	TRADE SIZE	UNIT PKG	STD PKG	DIM A	DIM B
EMT50C	12203	1/2	100	1000	.531	.840
EMT75C	12204	3/4	100	1000	.531	1.056
EMT100C	12207	1	100	100	.625	1.280
EMT125C	12209	1-1/4	100	100	.625	1.660
EMT150C	12211	1-1/2	100	100	.625	1.915
EMT200C	12213	2	50	50	.625	2.377
EMT250C*	12215	2-1/2	25	25	1.225	3.062
EMT300C*	12217	3	25	25	1.225	3.690
EMT350C*	12219	3-1/2	25	25	1.231	4.187
EMT400C*	12221	4	25	25	1.233	4.815

See hub illustration below.

Refer to page I-1 for Rigid Insulating Bushings size 1/2" through 4".

*Can also be used for rigid, IMC, and PVC rigid conduit.



Use this capped version to seal off conduit during concrete pours. Then remove cap/seal with razor knife or use screwdriver to punch hole in cap. (EMT300C)

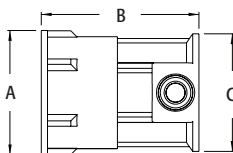


String can be used to aid removal.

Zinc Combination Couplings EMT to Rigid



2400



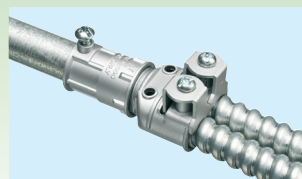
EMT set-screw to screw-in rigid metal conduit. Zinc die-cast.

CATALOG NUMBER	UPC/DCI/NAED MFG #018997	TRADE SIZE	UNIT PKG	STD PKG	DIM A	DIM B	DIM C
2400	06920	1/2" EMT to 1/2" female threaded	50	50	1.000	1.267	.946
2410	06921	3/4" EMT to 1/2" female threaded	50	50	1.000	1.412	1.200
2411	06922	3/4" EMT to 3/4" female threaded	50	50	1.210	1.475	1.200

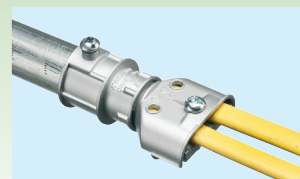
Use with any listed fitting.



INSTALLATION SHOTS



1/2" EMT to 2400 to SG3838 with flexible metal conduit



3/4" EMT to 2410 to 846 with NM cable



3/4" EMT to 2411 to L422 with flexible metal conduit