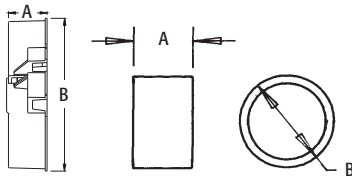


Insulating Bushings

EMT



EMT400S



EMT200S - EMT400S

Press fit. Holds firmly in place while pulling cables.

CATALOG NUMBER	UPC/DCI/NAED MFG #018997	TRADE SIZE	UNIT PKG	STD PKG	DIM A	DIM B
EMT50	12200	1/2	100	1000	.531	.840
EMT75	12205	3/4	100	1000	.531	1.056
EMT100	12220	1	100	100	.625	1.280
EMT125	12225	1-1/4	100	100	.625	1.660
EMT150	12230	1-1/2	100	100	.625	1.915
EMT200	12235	2	50	50	.625	2.377
EMT250*	12240	2-1/2	25	25	1.225	3.062
EMT300*	12245	3	25	25	1.225	3.690
EMT350*	12250	3-1/2	25	25	1.231	4.187
EMT400*	12255	4	25	25	1.233	4.815
Split Insulating Bushings†						
EMT200S	15301	2	50	50	.875	2.327
EMT250S*	12270	2-1/2	25	25	1.240	3.065
EMT300S*	12271	3	25	25	1.240	3.695
EMT350S*	12272	3-1/2	25	25	1.240	4.311
EMT400S*	22001	4	25	25	1.240	4.812

Refer to page I-1 for Rigid Insulating Bushings size 1/2" through 4".

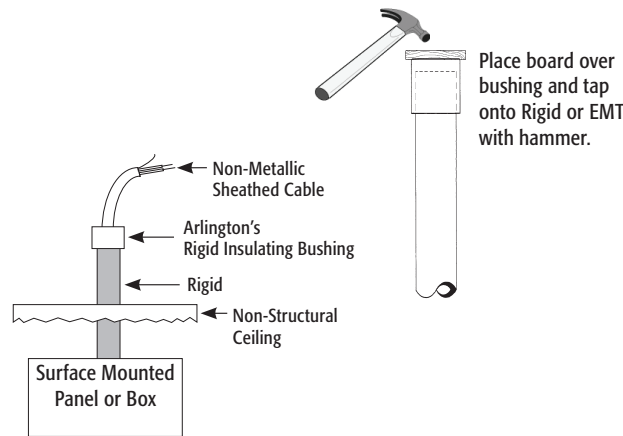
*Can also be used for rigid, IMC, and PVC rigid conduit.

Note: Meets 2014 NEC code requirements for 300.15(c) protection. Listed for use in environmental air handling spaces per 2014 NEC code requirements 300.22(c).

†PATENTED.



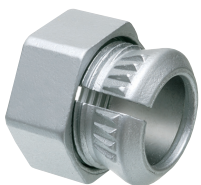
Scan For More Information



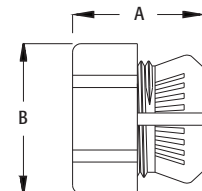
The new EMT400S insulating bushing is split for easy installation when cables are already in place. They press fit onto conduit and secure with a cable tie. When used for cable protection only, these insulating bushings are a perfect substitution for costly fittings.

EMT 2-Piece Connector

Zinc die-cast.



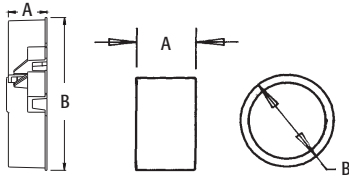
CATALOG NUMBER	UPC/DCI/NAED MFG #018997	TRADE SIZE	KO SIZE	UNIT PKG	STD PKG	DIM A	DIM B
L20	32000	1/2	1/2	50	250	.770	1.107



Insulating Bushings



EMT400S



EMT200S - EMT400S



NEW!
The new EMT400S insulating bushing is split for easy installation when cables are already in place. They press fit onto conduit and secure with a cable tie. When used for cable protection only, these insulating bushings are a perfect substitution for costly fittings.

For Rigid • IMC • Press fit. Holds firmly in place while pulling cables.

Arlington's Rigid Insulating Bushings protect cables from abrasion by rigid.

Examples: Power, Cable TV, computer datalines, telephone/modem, a/v cables, alarm systems, security systems. Rigid is often used to protect cables where damage could occur in a house or building.

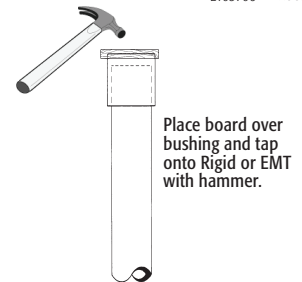
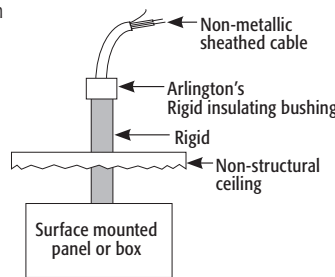
CATALOG NUMBER	UPC/DCI/NAED MFG #018997	TRADE SIZE	UNIT PKG	STD PKG	DIM A	DIM B
RGD50	51930	1/2	100	1000	.531	.989
RGD75	51932	3/4	100	1000	.531	1.185
RGD100	51933	1	100	100	.625	1.542
RGD125	51934	1-1/4	100	100	.625	1.891
RGD150	51935	1-1/2	100	100	.625	2.062
RGD200	51936	2	50	50	.625	2.655
EMT250*	12240	2-1/2	25	25	1.225	3.062
EMT300*	12245	3	25	25	1.225	3.690
EMT350*	12250	3-1/2	25	25	1.231	4.187
EMT400*	12255	4	25	25	1.233	4.815
Split Insulating Bushings†						
EMT200S	15301	2	50	50	.875	2.327
EMT250S*	12270	2-1/2	25	25	1.240	3.065
EMT300S*	12271	3	25	25	1.240	3.695
EMT350S*	12272	3-1/2	25	25	1.240	4.311
EMT400S*	22001	4	25	25	1.240	4.812

*Can also be used for EMT.

Note: Meets 2014 NEC code requirements for 300.15(c) protection. Listed for use in environmental air handling spaces per 2014 NEC code requirements 300.22(c).

See page B-1 for EMT Insulating Bushin size 1/2" through 4".

†PATENTED.

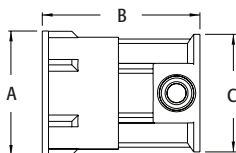


Place board over bushing and tap onto Rigid or EMT with hammer.

Zinc Combination Couplings EMT to Rigid



2400



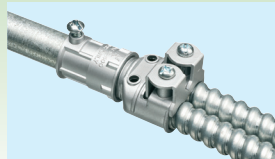
EMT set-screw to screw-in rigid metal conduit. Zinc die-cast.

CATALOG NUMBER	UPC/DCI/NAED MFG #018997	TRADE SIZE	UNIT PKG	STD PKG	DIM A	DIM B	DIM C
2400	06920	1/2" EMT to 1/2" female threaded	50	50	1.000	1.267	.946
2410	06921	3/4" EMT to 1/2" female threaded	50	50	1.000	1.412	1.200
2411	06922	3/4" EMT to 3/4" female threaded	50	50	1.210	1.475	1.200

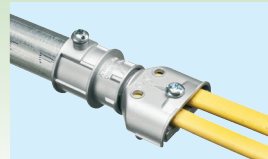
Use with any listed fitting.



INSTALLATION SHOTS



1/2" EMT to 2400 to SG3838 with flexible metal conduit



3/4" EMT to 2410 to 846 with NM cable



3/4" EMT to 2411 to L422 with flexible metal conduit

Insulating Bushings



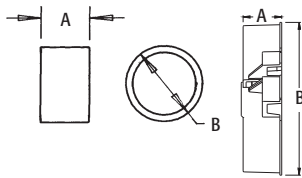
EMT50



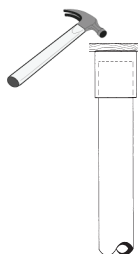
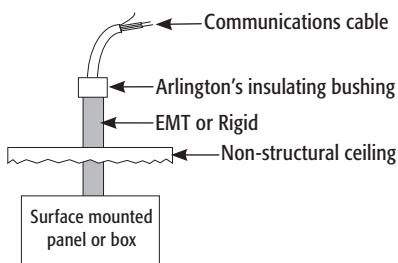
RGD50



EMT400S



EMT200S - EMT400S



Place board over bushing and tap onto EMT or Rigid with hammer.

Press fit. Holds firmly in place when pulling cables. For use with EMT, Rigid, IMC, PVC. Arlington's Insulating Bushings protect cables from abrasion by the conduit. Conduit is often used to protect cables where damage could occur in a house or building.

Examples: Power, Cable TV, computer datalines, telephone/modem, audio/video cables, alarm systems, and security systems.

FOR USE WITH EMT

CATALOG NUMBER	UPC/DCI/NAED MFG #018997	TRADE SIZE	UNIT PKG	STD PKG	DIM A	DIM B
EMT50	12200	1/2	100	1000	.531	.840
EMT75	12205	3/4	100	1000	.531	1.056
EMT100	12220	1	100	100	.625	1.280
EMT125	12225	1-1/4	100	100	.625	1.660
EMT150	12230	1-1/2	100	100	.625	1.915
EMT200	12235	2	50	50	.625	2.377
EMT250*	12240	2-1/2	25	25	1.225	3.062
EMT300*	12245	3	25	25	1.225	3.690
EMT350*	12250	3-1/2	25	25	1.231	4.187
EMT400*	12255	4	25	25	1.233	4.815
SPLIT INSULATING BUSHINGS†						
EMT200S	15301	2	50	50	.875	2.327
EMT250S*	12270	2-1/2	25	25	1.240	3.065
EMT300S*	12271	3	25	25	1.240	3.695
EMT350S*	12272	3-1/2	25	25	1.240	4.311
EMT400S*	22001	4	25	25	1.240	4.812

*Can also be used with Rigid, IMC, PVC

Note: Meets 2014 NEC code requirements for 300.15(c) protection. Listed for use in environmental air handling spaces per 2014 NEC code requirements 300.22(c).

†PATENTED.



E105706 LR49636

FOR USE WITH RIGID, IMC, PVC

CATALOG NUMBER	UPC/DCI/NAED MFG #018997	TRADE SIZE	UNIT PKG	STD PKG	DIM A	DIM B
RGD50	51930	1/2	100	1000	.531	.989
RGD75	51932	3/4	100	1000	.531	1.185
RGD100	51933	1	100	100	.625	1.542
RGD125	51934	1-1/4	100	100	.625	1.891
RGD150	51935	1-1/2	100	100	.625	2.062
RGD200	51936	2	50	50	.625	2.655



E105706 LR49636



The EMT400S insulating bushing is split for easy installation when cables are already in place. They press fit onto conduit and secure with a cable tie. When used for cable protection only, these insulating bushings are a perfect substitution for costly fittings.