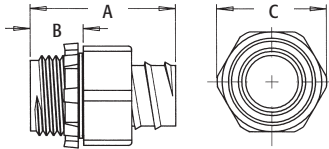
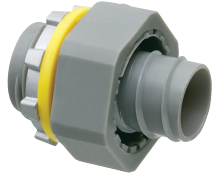


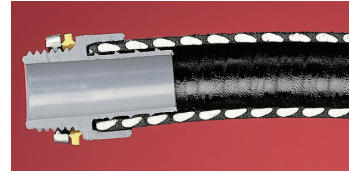
## Screw-On Straight Non-Metallic Connectors

For use with non-metallic liquid-tight conduit, type B only. Produced from UV rated plastic for long outdoor life.



| CATALOG NUMBER | UPC/DCI/NAED MFG #018997 | TRADE SIZE | KO SIZE | UNIT PKG | STD PKG | DIM A | DIM B | DIM C |
|----------------|--------------------------|------------|---------|----------|---------|-------|-------|-------|
| NMSC38         | 21005                    | 3/8        | 1/2     | 25       | 100     | 1.350 | .535  | 1.250 |
| NMSC50         | 21000                    | 1/2        | 1/2     | 25       | 100     | 1.410 | .535  | 1.228 |
| NMSC75         | 21010                    | 3/4        | 3/4     | 25       | 100     | 1.546 | .546  | 1.594 |
| NMSC100        | 14950                    | 1          | 1       | 5        | 25      | 1.810 | .650  | 1.750 |

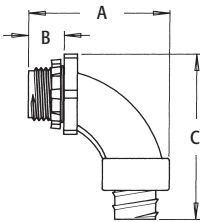
Add suffix "BL" to Catalog # when ordering in black, for example NMSC50BL.  
**PATENTED.**



Conduit threads onto ferrule and up inside the outer body. The inside taper squeezes down on the outside of conduit for a superior liquid-tight seal. The cut portion of the conduit does not show, giving a more attractive finished appearance. Also for use with flexible non-metallic tubing. These connectors screw on easily by hand and are removable with pliers.

## Screw-On 90° Non-Metallic Connectors

For use with non-metallic liquid-tight conduit, type B only. Produced from UV rated plastic for long outdoor life.



| CATALOG NUMBER | UPC/DCI/NAED MFG #018997 | TRADE SIZE | KO SIZE | UNIT PKG | STD PKG | DIM A | DIM B | DIM C |
|----------------|--------------------------|------------|---------|----------|---------|-------|-------|-------|
| NMSC9038       | 21003                    | 3/8        | 1/2     | 25       | 100     | 2.110 | .534  | 2.289 |
| NMSC9050       | 21007                    | 1/2        | 1/2     | 25       | 100     | 2.110 | .542  | 2.525 |
| NMSC9075       | 21009                    | 3/4        | 3/4     | 25       | 100     | 2.489 | .545  | 2.872 |
| NMSC90100      | 14951                    | 1          | 1       | 5        | 25      | 2.758 | .650  | 3.722 |

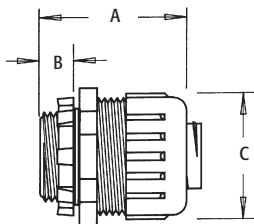
Add suffix "BL" to Catalog # when ordering in black, for example NMLT590BL.  
**PATENTED.**



Note: Screw connector onto the conduit until it stops. If the fitting is not in alignment with the knockout, you may unscrew the fitting up to one full turn for adjustment.

## Straight Non-Metallic Connectors

For use with non-metallic liquid-tight conduit, type B only. Produced from UV rated plastic for long outdoor life.



| CATALOG NUMBER | UPC/DCI/NAED MFG #018997 | TRADE SIZE | KO SIZE | UNIT PKG | STD PKG | DIM A | DIM B | DIM C |
|----------------|--------------------------|------------|---------|----------|---------|-------|-------|-------|
| NMLT38         | 54380                    | 3/8        | 1/2     | 25       | 100     | 1.425 | .535  | 1.421 |
| NMLT50         | 54500                    | 1/2        | 1/2     | 25       | 100     | 1.425 | .535  | 1.421 |
| NMLT75         | 54750                    | 3/4        | 3/4     | 10       | 50      | 1.475 | .550  | 1.583 |
| NMLT100        | 54100                    | 1          | 1       | 5        | 25      | 1.950 | .670  | 1.925 |
| NMLT125        | 04223                    | 1-1/4      | 1-1/4   | 5        | 25      | 2.217 | .645  | 2.418 |
| NMLT150        | 04222                    | 1-1/2      | 1-1/2   | 2        | 10      | 2.155 | .660  | 2.700 |
| NMLT200        | 04221                    | 2          | 2       | 2        | 10      | 2.400 | .670  | 3.360 |

Add suffix "BL" to Catalog # when ordering in black, for example NMSC50BL.



### INSTALLATION INSTRUCTIONS

Arlington's reusable Liquid-Tight Fittings may be secured to conduit while fully assembled because of our no-spin ferrule. Simply loosen nut, and screw onto conduit. A positive liquid-tight seal is provided by our pressure sensitive internal gland when the nut is tightened. A liquid-tight seal is also assured between the fitting and box by a sealing ring.