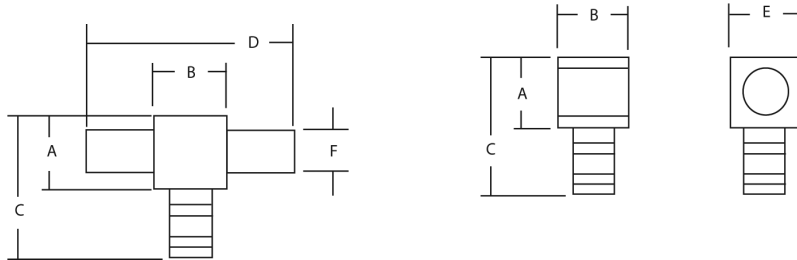


Motor Pigtail Connectors

One Line to Two Load (three wires)

- KON-TOUR™ louvered contact bands
- Colour-coded to match installing dies



Material: High-Conductivity Wrought Copper

Finish: Electro-Tin Plated

Contact Material: Beryllium Copper



Cat. No. Certified to 600 V		Wire Size	Body Size	Colour Code	Boot Insulation	Dimensions in. (mm)						Strip Length (in.)
Female Disconnect	Male Disconnect					A	B	C	D	E	F	
MD1614F-0	M2D1614M-0	16-14 AWG	0	Blue	MDBOOT-0	0.25 (6.4)		0.63 (16.0)	0.52 (13.2)	0.25 (6.4)	0.13 (3.3)	3/8
MD1614F-1	M2D1614M-1		1		MDBOOT-1	0.38 (9.7)	0.38 (9.7)	0.78 (19.8)	0.75 (19.1)	0.38 (9.7)	0.25 (6.4)	
MD1210F-1	M2D1210M-1	12-10 AWG	1	Yellow	M2DBOOT-1	0.38 (9.7)	0.35 (8.9)	0.78 (19.8)	0.75 (19.1)	0.38 (9.7)	0.25 (6.4)	7/16
MD1210F-2	M2D1210M-2		2		M2DBOOT-2	0.50 (12.7)	0.50 (12.7)	0.90 (22.9)	1.00 (25.4)	0.50 (12.7)	0.37 (9.4)	
MD8F-1	M2D8M-1	8 AWG	1	Red	M2DBOOT-1	0.38 (9.7)	0.38 (9.7)	0.82 (20.8)	0.75 (19.1)	0.38 (9.7)	0.25 (6.4)	1/2
MD8F-2	M2D8M-2		2		M2DBOOT-2	0.50 (12.7)	0.50 (12.7)	0.95 (24.1)	1.00 (25.4)	0.50 (12.7)	0.37 (9.4)	
MD6F-1	M2D6M-1	6 AWG	1	Blue	M2DBOOT-1	0.38 (9.7)	0.38 (9.7)	0.88 (22.4)	0.75 (19.1)	0.38 (9.7)	0.25 (6.4)	17/32
MD6F-2	M2D6M-2		2		M2DBOOT-2	0.50 (12.7)	0.50 (12.7)	1.02 (25.9)	1.00 (25.4)	0.50 (12.7)	0.37 (9.4)	
MD4F-2	M2D4M-2	4 AWG	2	Grey	M2DBOOT-2	0.50 (12.7)	0.50 (12.7)	1.03 (26.2)	1.00 (25.4)	0.50 (12.7)	0.37 (9.4)	9/16
MD2F-2	M2D2M-2	2 AWG	2			0.50 (12.7)	0.50 (12.7)	1.09 (27.7)	1.00 (25.4)	0.50 (12.7)	0.37 (9.4)	
MD2F-3	M2D2M-3			3	Brown	M2DBOOT-3	0.88 (22.4)	0.88 (22.4)	1.46 (37.1)	1.75 (44.5)	0.88 (22.4)	0.50 (12.7)
MD1F-2	M2D1M-2	1 AWG	2	Green	M2DBOOT-2	0.50 (12.7)	0.50 (12.7)	1.23 (31.2)	1.00 (25.4)	0.50 (12.7)	0.37 (9.4)	
MD1F-3	M2D1M-3			3	Pink		0.88 (22.4)	0.88 (22.4)	1.56 (39.6)	1.75 (44.5)	0.88 (22.4)	0.50 (12.7)
MD10F-3	M2D10M-3	1/0 AWG	3	Black	M2DBOOT-3	0.88 (22.4)	0.88 (22.4)	1.56 (39.6)	1.75 (44.5)	0.88 (22.4)	0.50 (12.7)	11/16
MD20F-3	M2D20M-3	2/0 AWG				0.88 (22.4)	0.88 (22.4)	1.59 (40.4)	1.75 (44.5)	0.88 (22.4)	0.50 (12.7)	
MD30F-3	M2D30M-3	3/0 AWG		Orange		0.88 (22.4)	0.88 (22.4)	1.71 (43.4)	1.75 (44.5)	0.88 (22.4)	0.50 (12.7)	3/4
MD40F-3	M2D40M-3	4/0 AWG		Purple		0.88 (22.4)	0.88 (22.4)	1.81 (46.0)	1.75 (44.5)	0.88 (22.4)	0.50 (12.7)	

Operating Range: 600 V max., 1000 V max. in signs and fixtures.

Listing: UL Listed and CSA Certified for 12/8 AWG solid copper conductors and stranded copper conductors in the sizes shown.

Selection: Always use the same body size when selecting male and female disconnects.

For example: to connect a 2 AWG male to an #8 AWG female, select cat. no. M2DM-2 and MD8F-2. Both have body size 2.

Insulation: Use insulating boots matching the disconnect body size as indicated in the chart.

To protect the connection from moisture and dirt, use sealing compound cat. no. MDBOOT-SEAL.

Tooling: pp. E4-E62

Die Selector Chart: pp. E35-E50