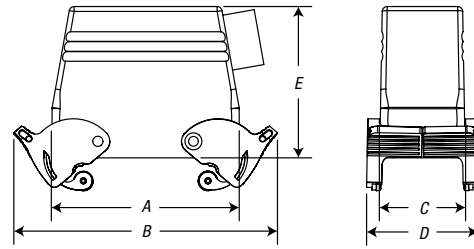


Technical Information

Mounting Dimensions for Double Lever Hoods (Reverse Locking)



HOUSING SERIES				CAT. NO.	DIMENSIONS ARE IN INCHES/(MILLIMETERS)				
A, B, T, K	C, V	D	DD		A	B	C	D	E
A32		D50		LH_32A	3.23/(82)	5.04/(128)	2.21/(56)	2.76/(70)	2.99/(76)
B10, T10	V3		DD42	LH_10E	2.87/(73)	4.33/(110)	1.69/(43)	2.28/(58)	1.89/(48)
				LH_10EH	2.87/(73)	4.33/(110)	1.69/(43)	2.28/(58)	2.84/(72)
B16, T16	C6, V6	D40	DD72	LH_16E	3.70/(94)	5.16/(131)	1.69/(43)	2.28/(58)	2.56/(65)
				LH_16EH	3.70/(94)	5.16/(131)	1.69/(43)	2.28/(58)	2.99/(76)
B24, T24, K12	V10, V16	D64	DD108	LH_24E	4.72/(120)	6.18/(157)	1.69/(43)	2.28/(58)	2.99/(76)

H — High Profile

Dust Covers for Housings



HOUSING SERIES				FOR SINGLE-LEVER HOUSINGS	FOR DOUBLE-LEVER HOUSINGS	FOR SINGLE-POST HOUSINGS	FOR DOUBLE-POST HOUSINGS
A, B, T, K	C, V	D	DD				
A3, A4		D7, D8		DCL103A-1			
A10		D15		DCL110A-1		DCS110A-1	
A16		D25		DCL116A-1		DCS116A-1	
A32		D50			DCL232A-1/DCL432A-1*		DCS232A-1
B6, T6**			DD24	DCL106B-1			
B10, T10**	V3		DD42	DCL110B-1	DCL210B-1/DCL410B-1*		
B16, T16**	C6, V6	D40	DD72	DCL116B-1	DCL216B-1/DCL416B-1*		
B24, T24**, K12	V10, V16	D64	DD108	DCL124B-1	DCL224B-1/DCL424B-1*		

* Comes with gasket for hoods with levers and without gaskets.

** Dust covers tested only to 125° C (if applied to 200° C Series T).

Gaskets

CAT. NO.		HOUSING SERIES			
PANEL BASE, FLAT	MOLDED EDGE CONTOUR*	A, B, T, K	C, V	D	DD
A04XFGP	A04XMEC	A3, A4		D7, D8	
A10XFGP	A10XMEC	A10		D15	
A16XFGP	A16XMEC	A16		D25	
A32XFGP	A32XMEC	A32		D50	
B6XFGP	B6XMEC	B6, T6**			DD24
B10XFGP	B10XMEC	B10, T10**	V3		DD42
B16XFGP	B16XMEC	B16, T16**	V6, C6	D40	DD72
B24XFGP	B24XMEC	B24, T24**, K12	V10, V16	D64	DD108
B32XFGP	B32XMEC	B32	C12	D80	DD144
B48XFGP	B48XMEC	B48, K24	V20, V26, V32	D128	DD216

* Install with silicone sealant/adhesive for industrial use.

** For T Series 200° C applications, specify catalog number except use "T" prefix instead of "B" for gaskets. EX: use "T16XFGP" for panel base gaskets.