

Interlocking Insulating Covers for Compression Taps

Better covers for taps.

Soft Shell H-Tap/ C-Tap Covers

Thomas & Betts offers an improved design for one-piece covers of H-Tap and C-Tap connectors. The new design is more size-efficient and includes an easy latch mechanism. The new covers also contain flash barriers to help protect against electrical flashovers. The covers are molded from high-impact polypropylene (UL94V-1) and are UL[®] Listed, CSA certified to 600V applications at 105° C.

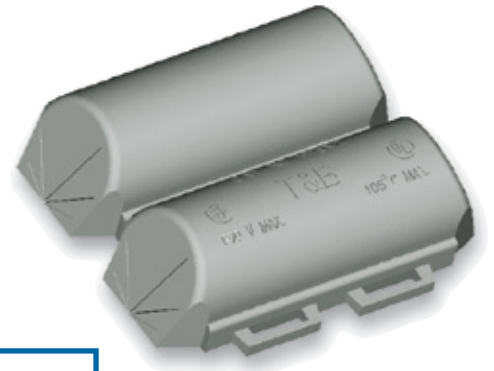
Blackburn[®] Soft Shell Covers include these features:

- **Size-efficient design**
Won't take up as much room in the enclosure or vault, easier to store and carry to the job site
- **Easy Latch Mechanism**
Quick but sturdy cover latch for optimum insulation
- **Flash Barriers**
Provides protection from electrical flashovers
- **105° C Rating**
Offers maximum performance and higher than many competitors' temperature ratings
- **High-Impact Polypropylene**
Constructed from rugged materials for long-lasting protection

Also available in clear, impact-resistant and flame-retardant polycarbonate (UL94V-0). The clear version includes an internal pocket for a visible identification label without opening the cover. Contact Customer Service for shipping and availability.



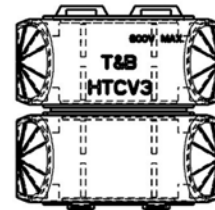
Smaller size requires less space in enclosure
High-impact polypropylene for rugged, dependable use



Easy latch mechanism



Clear, polycarbonate (UL94V-0) version available



CAT. NO.	FOR H-TAPS	FOR C-TAPS	DIMENSIONS (IN.)			PKG. QTY.
			A	B	C	
HTCV1	CHT814-10	54705, 54710, 54715	1 ³ / ₄	7 ¹ / ₈	9 ¹ / ₁₆	5
HTCV2	CHT214-9, CHT250214-8, CHT25014-7, CHT2502-6	54770, 54775, 54780	3 ³ / ₈	1 ¹ / ₈	1	5
HTCV3	CHT50010-5, CHT50040-4	54740, 54745, 54750, 54755, 54760, 54765	3 ⁷ / ₃₂	1 ¹ / ₈	1 ¹ / ₁₆	5
HTCV4	CHT75010-3, CHT750350-2, CHT750350-1F, CHT75040-11	N/A	5 ¹ / ₂	2	1 ¹ / ₁₆	5
HTCV2CLRFR	CHT214-9, CHT250214-8, CHT25014-7, CHT2502-6	N/A	3 ³ / ₈	1 ¹ / ₈	1	5