

# of Contacts + Ground Connection

### Bases — Standard Mount

				6	10	16	32
SINGLE LEVER	DOUBLE LEVER	HOUSING	NPT ENTRY	LEVER LOCKING TYPE			
				SINGLE	DOUBLE	DOUBLE	DOUBLE
		Panel Base		PB306T	PB110T	PB116T	PB124T
		Box Base (no Cover)	1 X 1/2"	BB406T	BB010T	BB016T	BB024T
			1 X 3/4" 2 X 1/2" 2 X 3/4"	BB506T	BB110T	BB116T	BB124T

Base

Base to Hood

### Hoods — Standard Mount

		Side Entry	1 X 1/2" 1 X 3/4" 1 X 1"	SH606T	SH010T	SH016T	SH024T SH124T
		Top Entry	1 X 1/2" 1 X 3/4" 1 X 1"	TH806T	TH210T	TH216T	TH224T TH324T

Hoods

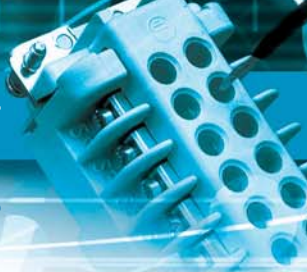
Hood to Coupler

### Coupler Hoods — Inline *For Inline, Portable or Special Service Connections. Coupler Hoods mate to Standard Hoods ONLY.*

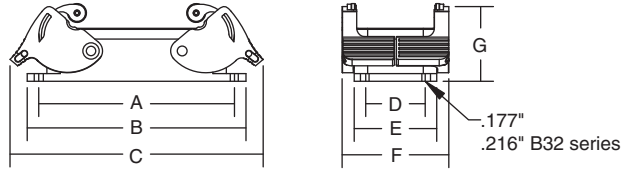
		Top Entry	1 X 1/2" 1 X 3/4" 1 X 1"	CH806T	CH610T	CH616T CH716T	CH624T CH724T
--	--	-----------	--------------------------------	--------	--------	------------------	------------------

Coupler

NOTE: Hoods and Bases are black colored to denote special T series.

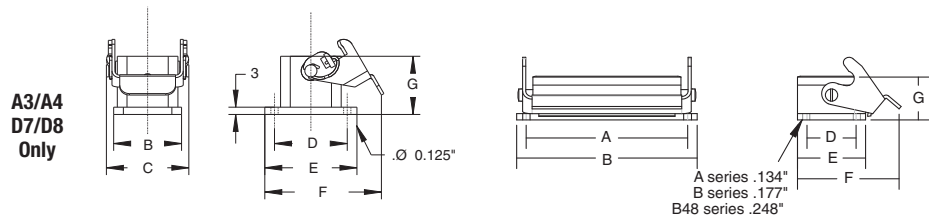


### Mounting Dimensions for Double Lever Panel Bases



HOUSING SERIES				CAT. NO.	DIMENSIONS ARE IN INCHES / (MILLIMETRES)						
A, B, T, K	C, V	D	DD		A	B	C	D	E	F	G
A32	D50			<b>PB132A</b>	3.62 / (92)	4.02 / (102)	5.04 / (128)	1.65 / (28)	2.24 / (57)	2.76 / (70)	1.10 / (28)
B10, T10	V3		DD42	<b>PB110E</b>	3.27 / (83)	3.66 / (93)	4.33 / (110)	1.26 / (32)	1.69 / (43)	2.28 / (58)	1.06 / (27)
B16, T16	C6, V6	D40	DD72	<b>PB116E</b>	4.05 / (103)	4.49 / (114)	5.16 / (131)	1.26 / (32)	1.69 / (43)	2.28 / (58)	1.06 / (27)
B24, T24,	V10, V16	D64	DD108	<b>PB124E</b>	5.12 / (130)	5.51 / (140)	6.19 / (157)	1.26 / (32)	1.69 / (43)	2.28 / (58)	1.06 / (27)
B32	C12	D80	DD144	<b>PB132E</b>	4.33 / (110)	4.88 / (124)	5.28 / (134)	2.56 / (65)	3.11 / (79)	3.62 / (92)	1.18 / (30)

### Mounting Dimensions for Single Lever Panel Bases



HOUSING SERIES				CAT. NO.	DIMENSIONS ARE IN INCHES / (MILLIMETRES)						
A, B, T, K	C, V	D	DD		A	B	C	D	E	F	G
A3, A4		D7, D8		<b>PB303A (P)*</b>	-	1.10 / (28)	1.34 / (34)	1.18 / (30)	1.50 / (38)	1.67 / (42.5)	.95 / (24)
				<b>PB403A (P)*</b>	-	1.10 / (28)	1.38 / (35)	1.18 / (30)	1.58 / (40)	1.85 / (47)	.95 / (24)
				<b>PB503A (P)</b>	1.10 / (28)	1.59 / (40.5)	1.00 / (25.5)	1.42 / (36)	1.18 / (30)	1.50 / (38)	
A10		D15		<b>PB310A</b>	2.76 / (70)	3.19 / (81)	-	.68 / (17.5)	1.20 / (30.5)	1.93 / (49)	1.02 / (26)
A16		D25		<b>PB410A</b>	2.76 / (70)	3.19 / (81)	-	.68 / (17.5)	1.20 / (30.5)	2.95 / (75)	1.02 / (26)
				<b>PB316A</b>	3.39 / (86)	3.78 / (96)	-	.68 / (17.5)	1.20 / (30.5)	1.93 / (49)	1.02 / (26)
B6, T6			DD24	<b>PB416A</b>	3.39 / (86)	3.78 / (96)	-	.68 / (17.5)	1.20 / (30.5)	2.95 / (75)	1.02 / (26)
				<b>PB306</b>	2.76 / (70)	3.15 / (80)	-	1.26 / (32)	1.69 / (43)	2.56 / (65)	1.06 / (27)
B10, T10	V3		DD42	<b>PB406</b>	2.76 / (70)	3.15 / (80)	-	1.26 / (32)	1.69 / (43)	3.54 / (90)	1.06 / (27)
				<b>PB310</b>	3.27 / (83)	3.66 / (93)	-	1.26 / (32)	1.69 / (43)	2.64 / (67)	1.06 / (27)
B16, T16	C6, V6	D40	DD72	<b>PB410</b>	3.27 / (83)	3.66 / (93)	-	1.26 / (32)	1.69 / (43)	3.62 / (92)	1.06 / (27)
				<b>PB316</b>	4.06 / (103)	4.49 / (114)	-	1.26 / (32)	1.69 / (43)	2.64 / (67)	1.06 / (27)
B24, T24,	V10, V16	D64	DD108	<b>PB416</b>	4.06 / (103)	4.49 / (114)	-	1.26 / (32)	1.69 / (43)	3.62 / (92)	1.06 / (27)
				<b>PB324</b>	5.12 / (130)	5.51 / (140)	-	1.26 / (32)	1.69 / (43)	2.64 / (67)	1.06 / (27)
B48, K24,	V20, V26	D128	DD216	<b>PB424</b>	5.12 / (130)	5.51 / (140)	-	1.26 / (32)	1.69 / (43)	3.62 / (92)	1.06 / (27)
				<b>PB348</b>	5.83 / (148)	6.50 / (165)	-	2.76 / (70)	3.54 / (90)	6.18 / (157)	1.61 / (41)
V32				<b>PB448</b>	5.83 / (148)	6.50 / (165)	-	2.76 / (70)	3.54 / (90)	6.81 / (173)	1.61 / (41)

\*Suffix: A - Aluminum, P - Plastic