

# of Contacts + Ground Connection

Bases – Standard Mount				24	32	48	
SINGLE LEVER	DOUBLE LEVER	HOUSING	NPT ENTRY	LEVER LOCKING TYPE			
				SINGLE	DOUBLE	DOUBLE	SINGLE
		Panel Base w/Cover		PB324 PB424 <sup>†</sup>	PB124E	PB132	PB348 PB448
		Box Base no Cover	1 X ¾" 1 X 1" 2 X ¾" 2 X 1"	BB424* BB424H100 BB524* BB524H100	BB024E* BB024EH100 BB124E* BB124EH100	BB032 BB132	BB448 BB548
		Box Base w/Cover	1 X ¾" 1 X 1" 2 X ¾" 2 X 1"	BB624* <sup>†</sup> BB624H100 <sup>†</sup> BB724* <sup>†</sup> BB724H100 <sup>†</sup>			BB648 BB748

Base  
Base to Hood

### Hoods — Standard Mount *\*Plastic body — "A" 3-16 Series standard Hoods include Gaskets: Bases and Special Hoods do not.*

		Side Entry	1 X ¾" 1 X 1" 1 X 1¼"	SH624** SH724**	SH024** SH124**	SH032 SH132 SH132-125	SH648 SH748
		Top Entry	1 X ¾" 1 X 1" 1 X 1¼" Ribbon Cbl	TH824** TH924** TH624RC <sup>‡</sup>	TH224** TH324** TH424RC <sup>‡</sup>	TH232 TH332 TH332-125	TH848 TH948

Hoods  
Hood to Coupler

### Coupler Hoods — Inline *For Inline, Portable or Special Service Connections. Coupler Hoods mate to Standard Hoods ONLY.*

		Top Entry	1 X ¾" 1 X 1" Ribbon Cbl	CH824 CH924 CH824RC <sup>‡</sup>	CH624E CH724E CH724ERC <sup>‡</sup>	CH632 CH732	
--	--	-----------	--------------------------------	--	---	----------------	--

Coupler

### Lever Hoods – Reverse Locking *Lever Hoods mate to Post Bases ONLY.*

	Side Entry w/Lever(s)	1 X ¾" 1 X 1"	LH024E LH124E
	Top Entry w/Lever(s)	1 X ¾" 1 X 1"	LH224E LH324E

Hoods  
Hood to Base

### Bases – with Access Cover *Post Bases accept Lever Hoods ONLY.*

	Panel Base w/Posts + Cover		PB224 <sup>†</sup>
	Box Base w/Posts + Cover	1 X ¾" 1 X 1" 2 X ¾" 2 X 1"	BB224* <sup>†</sup> BB224H100 BB324* <sup>†</sup> BB324H100

Bases

\*Notes: Available in Standard or HIGH Profile "H" configurations. (-add suffix)

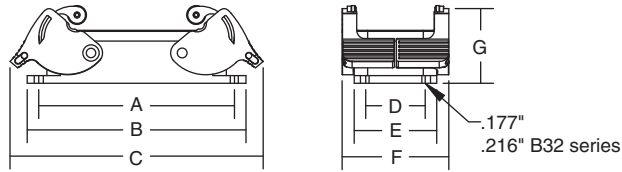
† Add "M" final suffix for metal cover option.

\*\*Notes: Available in Standard or LOW Profile "L" configurations. (-add suffix)

‡ See page G-57 for ribbon cable kits.

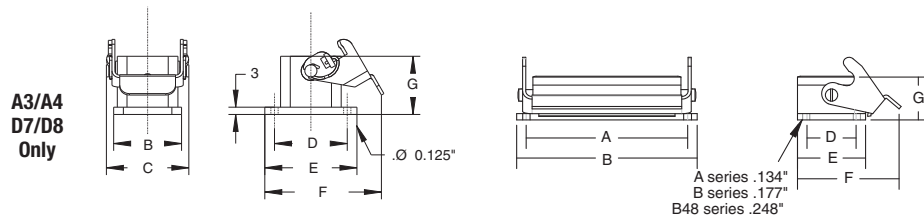


### Mounting Dimensions for Double Lever Panel Bases



HOUSING SERIES				CAT. NO.	DIMENSIONS ARE IN INCHES / (MILLIMETRES)						
A, B, T, K	C, V	D	DD		A	B	C	D	E	F	G
A32	D50			<b>PB132A</b>	3.62 / (92)	4.02 / (102)	5.04 / (128)	1.65 / (28)	2.24 / (57)	2.76 / (70)	1.10 / (28)
B10, T10	V3		DD42	<b>PB110E</b>	3.27 / (83)	3.66 / (93)	4.33 / (110)	1.26 / (32)	1.69 / (43)	2.28 / (58)	1.06 / (27)
B16, T16	C6, V6	D40	DD72	<b>PB116E</b>	4.05 / (103)	4.49 / (114)	5.16 / (131)	1.26 / (32)	1.69 / (43)	2.28 / (58)	1.06 / (27)
B24, T24,	V10, V16	D64	DD108	<b>PB124E</b>	5.12 / (130)	5.51 / (140)	6.19 / (157)	1.26 / (32)	1.69 / (43)	2.28 / (58)	1.06 / (27)
B32	C12	D80	DD144	<b>PB132E</b>	4.33 / (110)	4.88 / (124)	5.28 / (134)	2.56 / (65)	3.11 / (79)	3.62 / (92)	1.18 / (30)

### Mounting Dimensions for Single Lever Panel Bases



HOUSING SERIES				CAT. NO.	DIMENSIONS ARE IN INCHES / (MILLIMETRES)						
A, B, T, K	C, V	D	DD		A	B	C	D	E	F	G
A3, A4		D7, D8		<b>PB303A (P)*</b>	-	1.10 / (28)	1.34 / (34)	1.18 / (30)	1.50 / (38)	1.67 / (42.5)	.95 / (24)
				<b>PB403A (P)*</b>	-	1.10 / (28)	1.38 / (35)	1.18 / (30)	1.58 / (40)	1.85 / (47)	.95 / (24)
				<b>PB503A (P)</b>	1.10 / (28)	1.59 / (40.5)	1.00 / (25.5)	1.42 / (36)	1.18 / (30)	1.50 / (38)	
A10		D15		<b>PB310A</b>	2.76 / (70)	3.19 / (81)	-	.68 / (17.5)	1.20 / (30.5)	1.93 / (49)	1.02 / (26)
A16		D25		<b>PB410A</b>	2.76 / (70)	3.19 / (81)	-	.68 / (17.5)	1.20 / (30.5)	2.95 / (75)	1.02 / (26)
				<b>PB316A</b>	3.39 / (86)	3.78 / (96)	-	.68 / (17.5)	1.20 / (30.5)	1.93 / (49)	1.02 / (26)
B6, T6			DD24	<b>PB416A</b>	3.39 / (86)	3.78 / (96)	-	.68 / (17.5)	1.20 / (30.5)	2.95 / (75)	1.02 / (26)
				<b>PB306</b>	2.76 / (70)	3.15 / (80)	-	1.26 / (32)	1.69 / (43)	2.56 / (65)	1.06 / (27)
B10, T10	V3		DD42	<b>PB406</b>	2.76 / (70)	3.15 / (80)	-	1.26 / (32)	1.69 / (43)	3.54 / (90)	1.06 / (27)
				<b>PB310</b>	3.27 / (83)	3.66 / (93)	-	1.26 / (32)	1.69 / (43)	2.64 / (67)	1.06 / (27)
B16, T16	C6, V6	D40	DD72	<b>PB410</b>	3.27 / (83)	3.66 / (93)	-	1.26 / (32)	1.69 / (43)	3.62 / (92)	1.06 / (27)
				<b>PB316</b>	4.06 / (103)	4.49 / (114)	-	1.26 / (32)	1.69 / (43)	2.64 / (67)	1.06 / (27)
B24, T24,	V10, V16	D64	DD108	<b>PB416</b>	4.06 / (103)	4.49 / (114)	-	1.26 / (32)	1.69 / (43)	3.62 / (92)	1.06 / (27)
				<b>PB324</b>	5.12 / (130)	5.51 / (140)	-	1.26 / (32)	1.69 / (43)	2.64 / (67)	1.06 / (27)
B48, K24,	V20, V26	D128	DD216	<b>PB424</b>	5.12 / (130)	5.51 / (140)	-	1.26 / (32)	1.69 / (43)	3.62 / (92)	1.06 / (27)
				<b>PB348</b>	5.83 / (148)	6.50 / (165)	-	2.76 / (70)	3.54 / (90)	6.18 / (157)	1.61 / (41)
V32				<b>PB448</b>	5.83 / (148)	6.50 / (165)	-	2.76 / (70)	3.54 / (90)	6.81 / (173)	1.61 / (41)

\*Suffix: A - Aluminum, P - Plastic