



## STRAIN-RELIEF GRIPS | Wide-Range Grips | Cord Sealing Grips

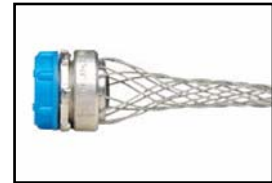
### Strain-Relief Grips

Strain-relief grips are used to connect cords or cable to electrical enclosures and equipment. These grips prevent pullout due to tension and limit the arc of bend at the point of entry; strain is distributed over the length of mesh rather than concentrated at one point or transferred to the internal termination.

### Wide-Range Grips

Wide-range grips are recommended for use in the wiring of enclosures, power boxes, machine tools, and power centers. They have an anodized aluminum body, galvanized steel mesh and include an insulated bushing (dust-tight).

Single Weave Galvanized Steel Mesh  				
Cat. No.	Cable Dia. Range (Inches)	NPT Size (Inches)	Mesh Length @ Nominal Dia. (Inches)	Minimum Distance Between Grips (Inches)
L7501	0.22-0.32	1/2	4	1 1/4
L7502	0.30-0.43	1/2	4 1/2	1 1/4
L7503	0.40-0.54	1/2	5 1/2	1 1/4
L7504	0.52-0.73	3/4	6 1/2	1 1/2
L7505	0.70-0.97	1	8	1 7/8
L7506	0.94-1.25	1 1/4	9	2 3/8
L7507	1.20-1.50	1 1/2	11	2 5/8
L7508	1.40-1.75	2	13	3 1/4
L7509	1.62-2.00	2 1/2	13 1/2	3 5/8
L7511	2.00-2.45	2 1/2	13 1/2	3 5/8





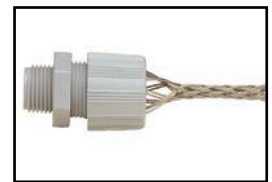
L7504  
Galvanized steel mesh

### Cord Sealing Grips

Cord sealing grips with mesh are nylon devices used to connect electrical cables to boxes, cabinets, pushbuttons, enclosures, etc. They are liquid-tight devices that are highly resistant to impact and corrosion. Non-metallic cord sealing grips will not support combustion. The ratings are: Wire Mesh Grip-94 HB and Fitting-94V-2.

Cord sealing grip products are suitable for use in wet locations so long as a listed sealing ring is used between the box and the fitting (sealing ring not included).

Nylon Cord Sealing Grips with Mesh, Straight and 90°   **						
Cat. No.	Stainless Steel Mesh		Cat. No.		Cable Dia. Range (Inches)	NPT (Form Size)
	Straight	90°	Straight	90°		
L7521	—	L7527	L7522	L7524	.187-.250	1/2" (F2)
—	L7527	—	—	L7528	.250-.312	1/2" (F2)
—	L7532	—	—	L7533	.312-.375	1/2" (F2)
—	L7536	—	—	—	.375-.437	1/2" (F2)
L7538	L7541	L7539	L7539	L7542	.437-.500	1/2" (F2)
L7543*	L7544*	—	—	—	.500-.562	1/2" (F2)
L7545*	L7546*	—	—	—	.562-.625	1/2" (F2)
L7601	—	L7602	L7602	L7604	.187-.250	3/4" (F3)
L7605	—	—	—	—	.250-.375	3/4" (F3)
—	L7612	—	—	—	.375-.437	3/4" (F3)



L7521  
Straight — SS mesh



L7527  
90° — SS mesh

\*Cable jacket may have to be stripped for clearance.

Note: F2, F3 and F4 are fitting form sizes.

\*\*Cord Sealing grips with non-metallic mesh are UL Listed and CSA Certified.

Cord Sealing grips with stainless steel mesh are CSA Certified only

Continued on next page

Continued from previous page

Nylon Cord Sealing Grips with Mesh, Straight and 90°   **					
Cat. No. Stainless Steel Mesh Straight 90°		Cat. No. Non-Metallic Mesh Straight 90°		Cable Dia. Range (Inches)	NPT (Form Size)
L7552	L7554	L7553	L7555	.500-.625	3/4" (F3)
L7556	—	—	L7559	.562-.687	3/4" (F3)
L7561	L7563	L7562	—	.625-.750	3/4" (F3)
L7565*	L7566*	—	—	.687-.812	3/4" (F3)
L7567	—	L7568	L7569	.437-.562	1" (F4)
—	L7573	—	L7574	.500-.625	1" (F4)
—	L7582	—	—	.625-.750	1" (F4)
L7584	—	—	L7587	.687-.812	1" (F4)
L7588	—	—	L7592	.750-.875	1" (F4)
L7597	—	—	—	.875-1.000	1" (F4)



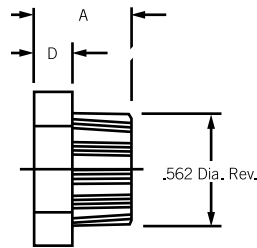
L7553  
Straight — nylon mesh

\*Cable jacket may have to be stripped for clearance.  
Note: F2, F3 and F4 are fitting form sizes.

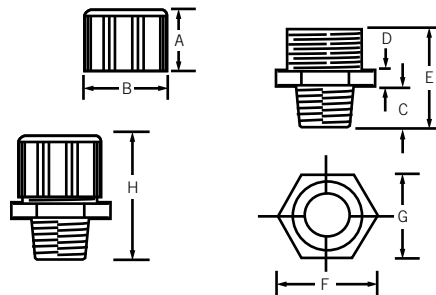
\*\*Cord Sealing grips with non-metallic mesh are UL Listed and CSA Certified.  
Cord Sealing grips with stainless steel mesh are CSA Certified only

### Nylon Cord-Sealing Fittings, Straight Body

Form 0



Form 1-5



#### Dimensions for Nylon Cord-Sealing Fittings, Straight Body (units are in inches)

Form	NPT	A	B	C	D	E	F	G	H (Ref.)
0	1/4"	.500	.778	.370	.187	.921	.778	.687	1.25
1	3/8"	1.000	1.150	.500	.250	1.250	1.115	1.000	1.85
2	1/2"	1.000	1.300	.500	.300	1.450	1.250	1.100	2.00
3	3/4"	1.000	1.500	.550	.375	1.700	1.578	1.375	2.00
4	1"	1.000	1.850	.687	.375	1.800	1.900	1.650	2.12