


## WEATHER-RESISTANT COVERS | Raintight While-In-Use Covers

### Die-Cast Zinc Raintight While-In-Use Covers

#### Features and Benefits

- Powder-coated cast zinc construction resists scratching and corrosion
- Self-closing lid with stainless steel hinge
- Choice of vertical and horizontal mounting
- Includes duplex and Decora® plates, mounting hardware and gaskets
- NEMA Type 3R Enclosure
- Accepts standard padlock for increased security

#### Vertical and Horizontal Mounting

Description	Mounting	Color	Cat. No.
 Duplex and Decora® Plate Configurations	Vertical	White	M5979-W
	Vertical	Gray	M5979-GY
Duplex and Decora® Plate Configurations	Horizontal	Gray	M5999-GY

#### Testing and Code Compliance

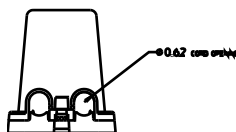
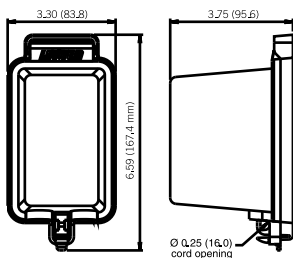
NEMA	UL	CSA	NEC
3R rated for use in wet or damp locations with cover closed Meets NEC® Section 406.8(B)(1) requirements	Full Compliance Section 410-57B for use in wet or damp locations with cover closed	Full Compliance Section 410-57B for use in wet or damp locations with cover closed	Full Compliance Section 410-57B for use in wet or damp locations with cover closed



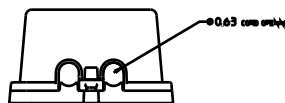
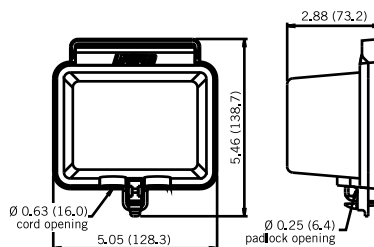
M5999-GY

#### Dimensions

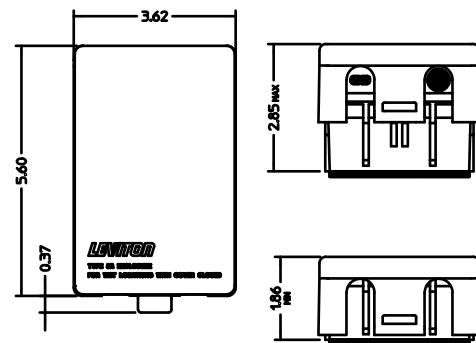
Vertical Mount, Extra Deep



Horizontal Mount, Standard



Thermoplastic Telescoping



#### Related Products

Leviton's weather-resistant outdoor grade GFCIs are designed to withstand the elements with cold impact resistant face and buttons. See page D-6 in the GFCIs and AFCIs section for more information.