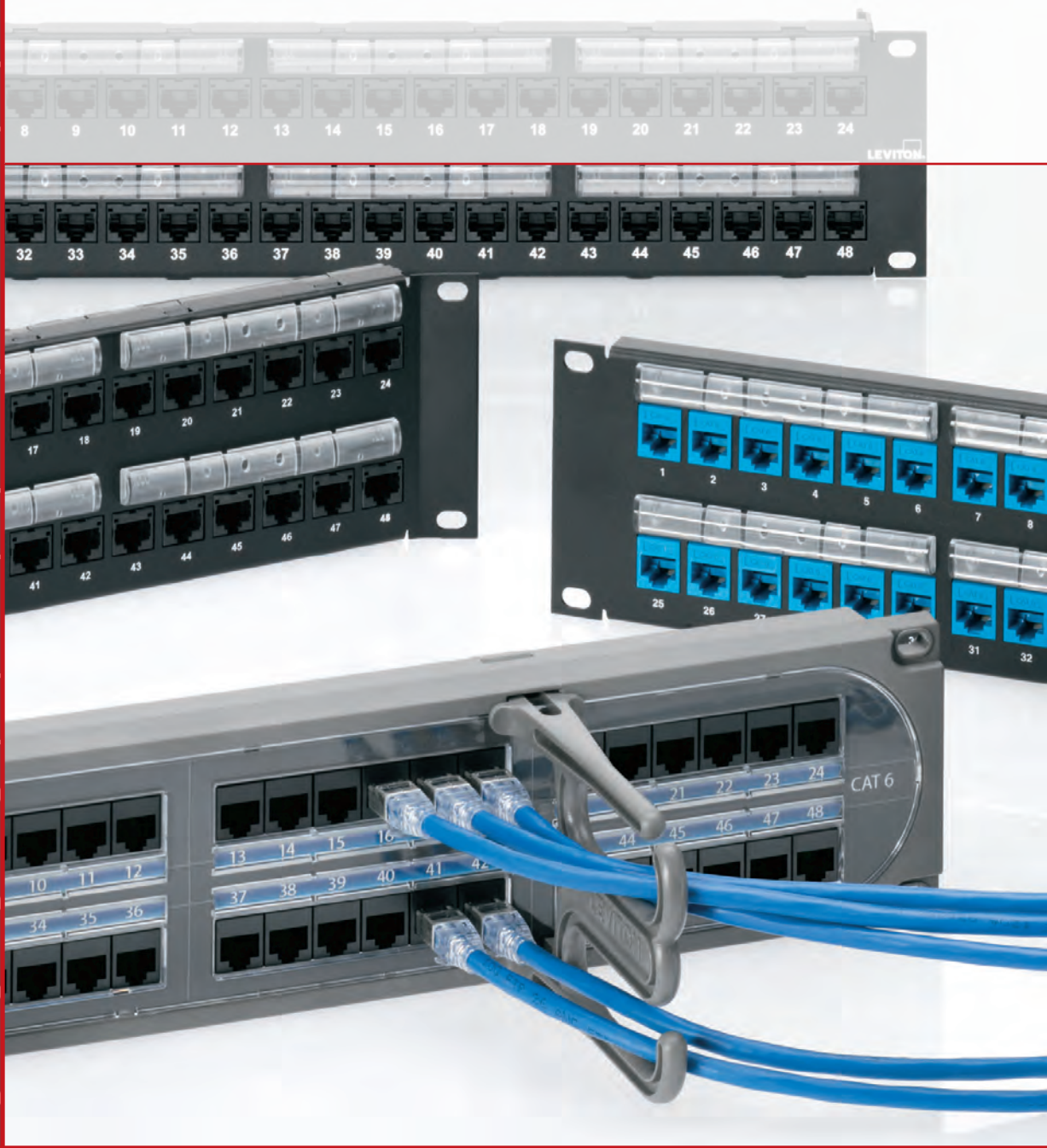


30 Years



FEATURED PRODUCTS

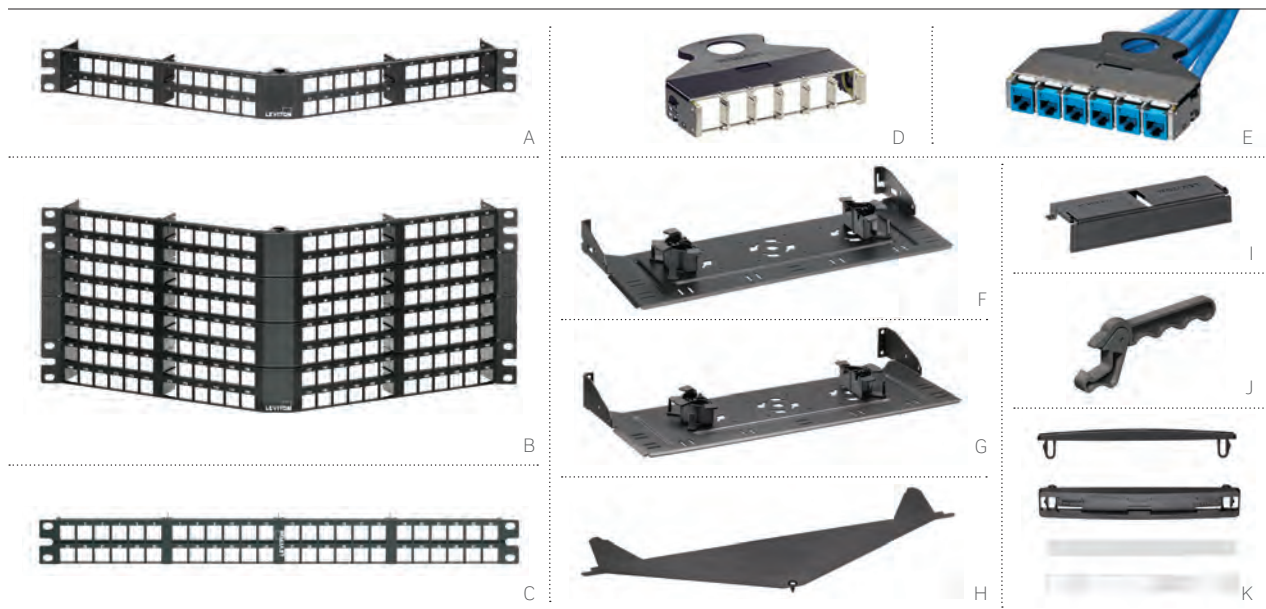
Composite Patch Panels **A15**

1RU 48-Port QuickPort® High-Density Flat & Angled Panels **A14, A16**

e2XHD Snap-In Cassette Patching System **A18**

Patch Panels & Cross Connect

Choose Leviton for all your patch panel needs. Our e2XHD high-density panels make patching easier than ever, using snap-in copper and fiber cassettes. Other popular styles include the 1RU 48-port, component-rated Cat 6A 110-style, and composite panels with a customizable face. Additional UTP and shielded panels, the patented Zero-U Vertigo®, die-cast high-density panels, recessed panels for close quarters, and two angled styles round out the industry's largest selection of patch panels.



The e2XHD Snap-In Cassette Patching System includes 1RU and 4RU panels, copper and fiber snap-in cassettes, and accessories for additional cable protection and management. The e2XHD cassettes quickly snap in and pull out of the high-density angled panel, making installation, moves, adds, and changes easier than ever.

- Panels allow mix-and-match of Leviton fiber and copper UTP snap-in cassettes
- Cassettes are available empty or on pre-terminated trunks (see Leviton.com/configurator)
- UTP Copper connectors easily snap into cassette after termination
- System accessories include rear cable managers, blank cassette inserts for unused cassette openings, and a cover for the angled panel, minimizing dust or debris

e2XHD UTP SNAP-IN CASSETTE PATCHING SYSTEM

DESCRIPTION	PART NO.
[A] 1RU 48-Port e2XHD Angled High-Density Panel	E2X1A-D48
[B] 4RU 192-Port e2XHD Angled High-Density Panel	E2X4A-192
[C] 1RU 48-Port e2XHD Flat High-Density Panel	E2X1F-D48
4RU 192-Port e2XHD Flat High-Density Panel	E2X4F-192
[D] 6-port e2XHD Cassette, empty*	E2XHD-BRK
[E] e2XHD Copper Cassette, terminated to trunk cable	configure online at Leviton.com/e2XHD
[F] e2XHD Rear Cable Manager for Angled Panel, with fiber storage rings (four ¼" rings)	E2XHD-CMB
[G] e2XHD Rear Cable Manager for Flat Panel, with fiber storage rings (four ¼" rings)	E2X1F-CMB
[H] e2XHD Angled Panel Cover	E2XHD-COV
[I] e2XHD Cassette Blank	E2XHD-BLK
[J] QuickPort® Connector Removal Tool	E2XHD-JRT
[K] e2XHD Label Kit (4 pack)*	E2XHD-LBL

e2XHD Snap-In Cassette Patching System for fiber applications on pages B29-B32.

* = QuickPort connectors sold separately (see pages A32-A34).

+ = Label kit occupies one row of panel.