

Cylindra™

Applying a new twist to a traditional design, Cylindra Series offers a unique, contemporary aesthetic based on a step cylinder fixture platform. Gentle arcs elegantly blend with bold edges to provide a unique yet timeless visual appeal. The Cylindra Flex 12 low voltage is designed to use 50W MR16 halogen lamps. Each Cylindra fixture is supplied with an integral bayonet mount media cartridge to simultaneously accept up to two 2" light control accessories.

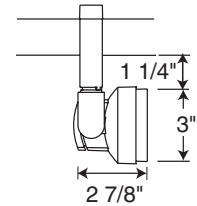


Catalog #
TF141SL

Finish
Silver

Lamp
12V or 24V 50W max. MR16

Dimensions



Conix®

The stylish Conix, featuring Juno's proprietary wishbone yoke design, possesses a fully enclosed lamp housing and can rotate more than 360° to eliminate aiming dead spots. The Conix Flex 12 low voltage is designed to use 50W MR16 halogen lamps. Each fixture includes an integral snoot that is designed to simultaneously accept up to two 1 3/4" light control accessories.

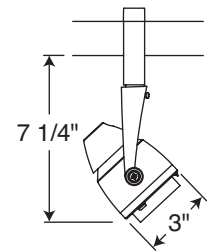


Catalog #
TF106SL

Finish
Silver

Lamp
12V or 24V 50W max. MR16

Dimensions



Gyrus™

A new spin on a classic design the Gyrus series combines dramatic aerodynamic styling with an integral accessory holder that accepts up to two standard 2" diameter lenses and louvers. The snap-on design makes this an easy to accessorize fixture for more demanding display lighting applications.

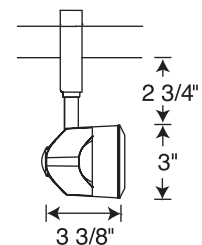


Catalog #
TF140SL

Finish
Silver

Lamp
12V or 24V 50W max. MR16

Dimensions



Light Control Accessories

For Fixtures:	TF141	TF106	TF140
Color Filters/Lenses	T741-6*	T551-5	T741-6
Dichroic Lenses	T7401-18*	T5501-18	T7401-18
Diffuse Spread Lens	T7420*	T5520	T7420
Uniformity Lens	T7421*	T5521	T7421
UV Filter Lens	T7422*	T5522	T7422
Prismatic Spread Lens	T7477*	T557	T7477
Linear Spread Lens	T7478*	T559	T7478
Hexcell Louver	T7459BL*	T5559BL	T7459BL

*Filters, lenses, louvers and barn doors require Accessory Holder for installation.