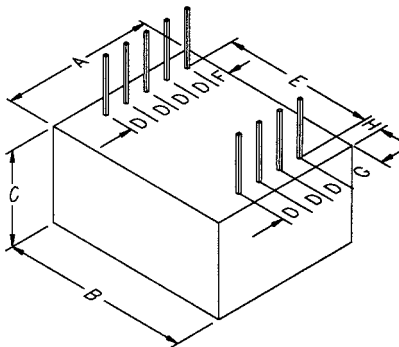
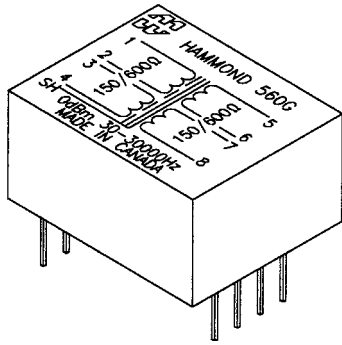
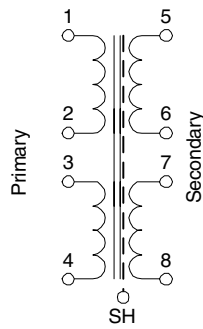


Broadcast Quality (560 Series)



P.C. BOARD MOUNT - EPOXY POTTED AUDIO TRANSFORMERS

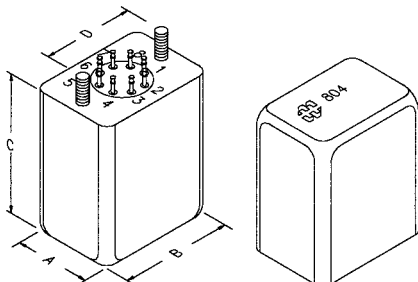
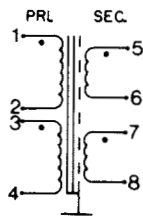
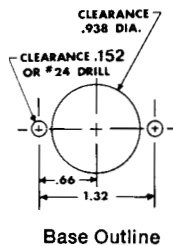
- Rugged black epoxy potted case with 9 pin connections (.025" square by 0.5" long).
- Frequency response @ 0 dbm +/- 1 db max. (+/- 0.5 db is typical) of 30 Hz. to 30 KHz., except 560Q which is 30 Hz. to 15 KHz.
- Insertion loss of 1 db max.
- Maximum power level 0 dbm.
- Electrostatic shield between primary & secondary connected to core and pin "SH".
- Humbucking construction
- Balanced split windings on primary & secondary for circuit versatility.
- Primaries and secondaries can be reversed for impedance matching.
- Overall dimensions 1.64" x 1.33" x 0.85" high max.
- Shipping weight 4 oz.

Part No.	Application	Nominal Impedance	
		Primary	Secondary
560C	Emitter or mic to Line	12/48	150/600
560E	Emitter or mic to Line	50/200	150/600
560G	Isolating or Hybrid	150/600	150/600
560J	Collector to Line or Line to Base	150/600	1200/4800
560L	Collector to Line or Matching	150/600	5K/20K
560N	Collector to Line	150/600	10K/40K
560Q	Matching or Bridging	10k/40k	10K/40K

Dimensions (Inches)							
A	B	C	D	E	F	G	H
1.33	1.64	0.85 Max.	0.20	1.30	0.141	0.344	0.156

Audio

CHASSIS MOUNT - HERMETICALLY SEALED AUDIO TRANSFORMERS



- Deep-drawn steel case with tin plated finish, with two convenient 6-32 mounting studs with hardware.
- Hermetically sealed for stable characteristics and long life. Header has nine 0.22" long solder pins.
- Frequency response +/- 0.5 db max. from 50 Hz. to 15 KHz.
- Insertion loss of apx. 1 db.
- Maximum power level +15 dbm. (except 841, 842 & 844 which are +20 dbm) with specified characteristics, or higher levels with reduced low frequency performance.
- Electrostatic shield between primary & secondary connected to terminal 9.
- Humbucking construction
- Balanced split windings on primary & secondary for circuit versatility. Primary may be used as a secondary and vice versa for impedance matching.
- Overall dimensions 1.75" wide x 1.25" deep x 2.56" high max.
- Shipping weight 0.5 lb.



CANADA
Guelph, Ontario (519) 822-2960
St. Laurent, Quebec (514) 343-9010
USA
Cheektowaga, NY (716) 630-7030

www.hammondmfg.com



EUROPE
Basingstoke, UK 01256 812812

AUSTRALIA
Queenstown, Australia 61-8-8240-2244