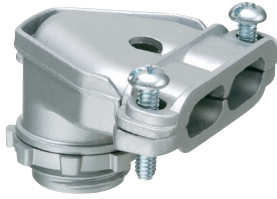


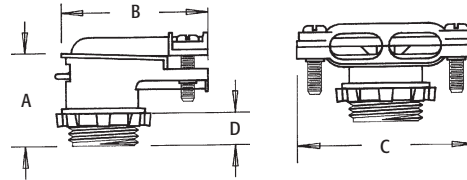
90° Duplex Connector



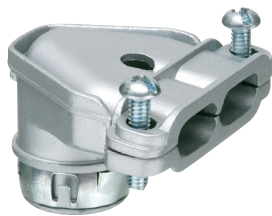
Zinc die-cast.
Twin screw for Flex • NM • AC • MCI steel and aluminum jacketed cables • MCI-A cable.

CATALOG NUMBER	UPC/DCI/NAED MFG #018997	TRADE SIZE	KO SIZE	UNIT PKG	STD PKG	DIM A	DIM B	DIM C	DIM D	CABLE RANGE
84690	00090	3/8	1/2	10	100	1.087	1.707	1.965	.379	.512-.610

Refer to chart on page E-27 for a list of cable types.
See page E-30 and E-31 for MCI-A cable ranges.
Concrete tight when taped.



90° SNAP-TITE® Connector



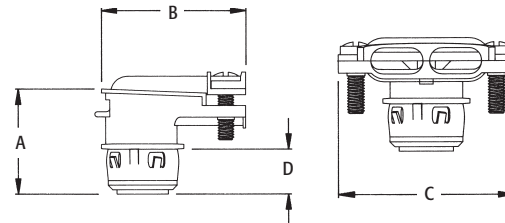
Zinc die-cast.
Twin screw for NM • Flex • AC • MCI steel and aluminum jacketed cables • MCI-A cable.
SNAP-TITE® and SNAP2IT® products have been tested and listed by UL in accordance with UL's ground fault requirements. For additional information see page 7.
(See page E-1 for ring removal instructions.)

CATALOG NUMBER	UPC/DCI/NAED MFG #018997	TRADE SIZE	KO SIZE	UNIT PKG	STD PKG	DIM A	DIM B	DIM C	DIM D	CABLE RANGE
84690ST	58230	3/8	1/2	10	100	1.087	1.707	1.965	.458	.512-.610

Refer to chart on page E-27 for a list of cable types.
See page E-30 and E-31 for MCI-A cable ranges.
Concrete tight when taped.



PATENTED.



Set-Screw Connectors



For Flex • AC • MCI cable. Zinc die-cast. Not for use with aluminum jacketed cables.

CATALOG NUMBER	UPC/DCI/NAED MFG #018997	TRADE SIZE	KO SIZE	UNIT PKG	STD PKG	DIM A	DIM B	DIM C	CABLE RANGE	END STOP DIAMETER
L48	34800	1/2	1/2	25	250	1.470	.450	1.260	.625-.915	.620
L49	34900	3/4	3/4	20	200	1.540	.450	1.500	.820-.910	.815

Refer to chart on page E-29 for a list of cable types.
Concrete tight when taped.

