



38AST



40AST

Zinc die-cast. For AC • MCI-A • HCF steel and aluminum cable • Flexible metal conduit steel and aluminum (regular and reduced wall) • MCI cable • Continuous corrugated aluminum • AC90 SNAP-TITE[®] and SNAP2IT[®] products have been tested and listed by UL in accordance with UL's ground fault requirements. For additional information see page 7.

NO TOOLS!

- Safe and fast installations
- Saves about 17 seconds per fitting!
- Competitively priced

CATALOG NUMBER	UPC/DCI/NAED MFG #018997	TRADE SIZE	KO SIZE	UNIT PKG	STD PKG	DIM A	DIM B	DIM C	DIM D	CABLE RANGE
38AST*	00070	3/8	1/2	50	500	1.410	.850	.405	1.000	.405 - .612
38A*	00038	3/8	1/2	50	500	1.410	.850	.405	1.000	.405 - .612
380ST	00381	3/8	1/2	50	500	1.280	.850	.400	1.000	.405 - .612
380AST*	00382	3/8	1/2	50	500	1.280	.850	.400	1.000	.405 - .612

*Provided with insulated throat.
PATENTED.



WITH INSULATED THROAT AND RED TINTED INSIDE CLIP

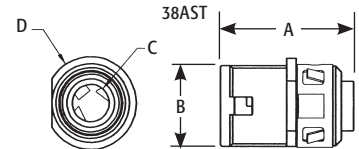
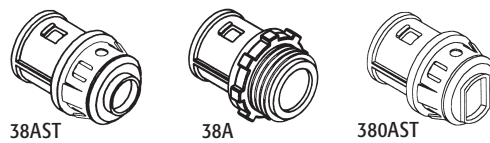
CATALOG NUMBER	UPC/DCI/NAED MFG #018997	TRADE SIZE	KO SIZE	UNIT PKG	STD PKG	DIM A	DIM B	DIM C	DIM D	CABLE RANGE
40AST	00041	3/8	1/2	50	500	1.410	.850	.405	1.000	.485 - .612
400AST	40347	3/8	1/2	50	500	1.280	.850	.400	1.000	.485 - .612
40A	00041	3/8	1/2	50	500	1.280	.850	.400	1.000	.485 - .612

Refer to chart on page E-27 for a list of cable types.
Concrete tight when taped.
Flexible metal conduit, CSA listed with anti-short bushing (UL not applicable).
See page E-30 and E-31 for MCI-A cable ranges.



PATENTED.

For EASIER MC/AC Installations see **3810AST** to **7510AST** on page E-2

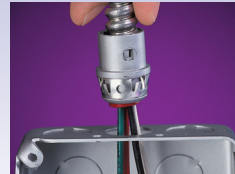


INSTALLATION INSTRUCTIONS

SNAP²IT Connectors are EASY to Install...

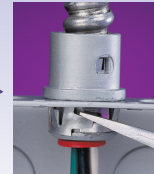


Snap onto cable and give a clockwise twist.



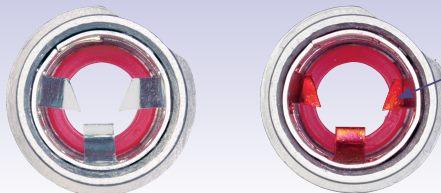
Just snap into box!

And EASY to Remove...



Using a screwdriver, lift the ring and twist off.

COMPARE...



RED TINTING means 'OPEN TANG' Design!

It gives you **more room** inside the fitting for easy insertion of wires. The redesigned front end makes it easier than ever to snap the fitting into box!